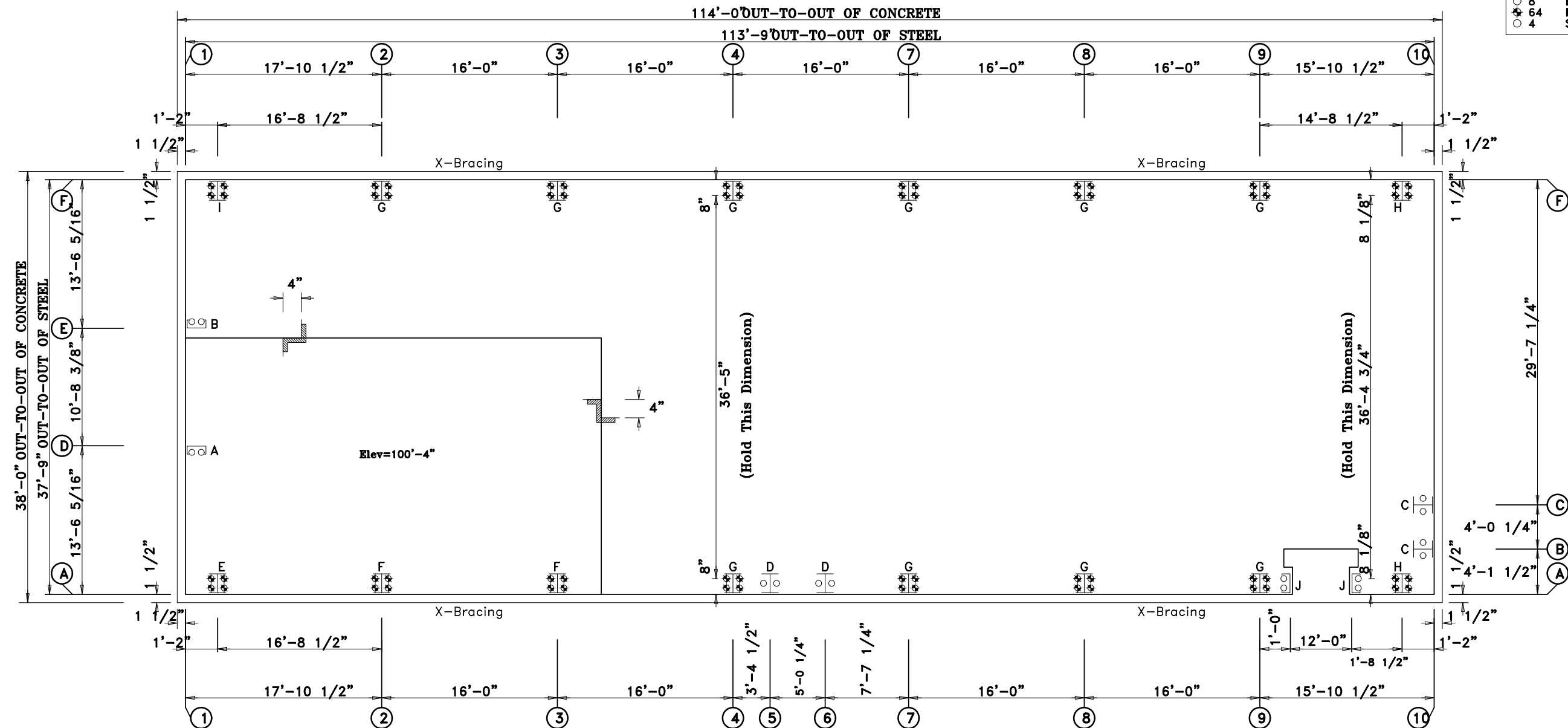


Standard Structures, Inc.

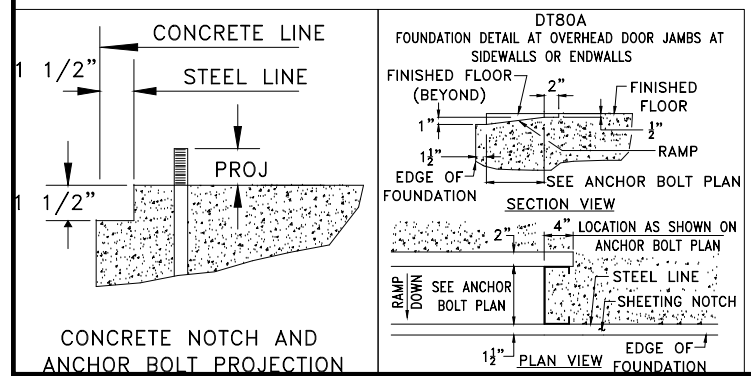
Job# 25085
Final Design

ANCHOR BOLT SUMMARY

Qty	Locate	Dia (in)	Type	Total Len (in)	Proj (in)
4	Jamb	5/8"	A307	12.0	1.50
8	Endwall	5/8"	A307	18.0	1.50
64	Frame	3/4"	A307	18.0	2.00
4	Soldier	5/8"	A307	18.0	1.50



ANCHOR BOLT PLAN
NOTE: All Base Plates @ 100'-0" (U.N.)



APPROVAL DRAWINGS

APPROVED AS DRAWN
 APPROVED AS NOTED
 NOT APPROVED

____ INITIAL

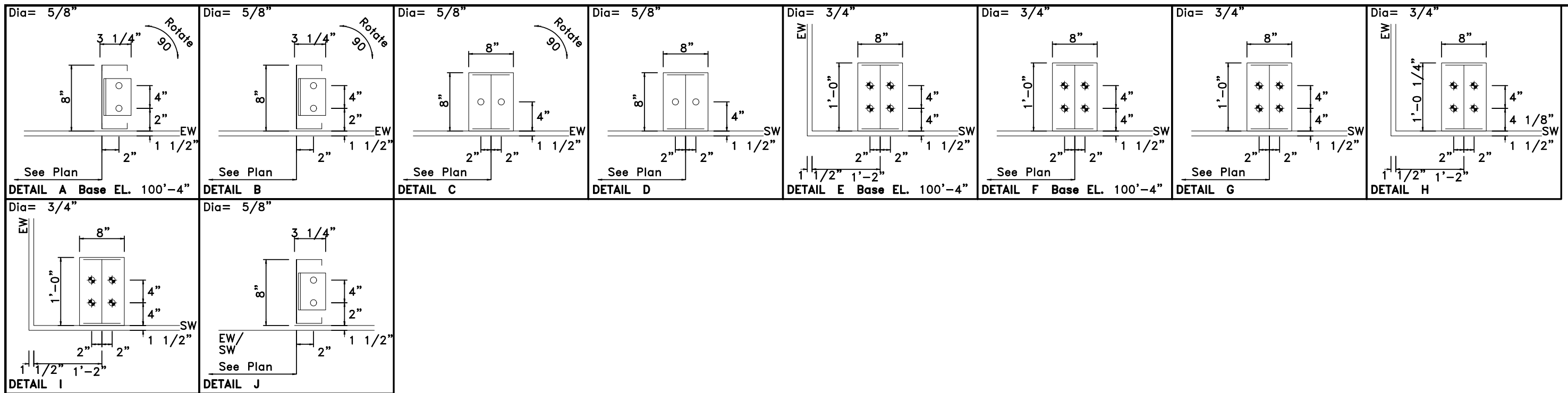
Please Check And Approve All Dimensions And Conditions. STANDARD STRUCTURES Must Be Notified Of Any Changes.

SSI STANDARD STRUCTURES INC.
 MANUFACTURER OF METAL BUILDINGS & COMPONENTS
 P.O. BOX 1912
 ODESSA, TX. 79760
 1-800-240-0335

IAS
 ACCREDITED™
 Metal Building Systems
 AC 472

APPROVAL & PERMIT

JOB NAME: Keystone Metal Buildings
 PROJECT NAME: RCH Take Point Pump Station
 JOB LOCATION: Terrell, TX 75160
 DRAWING TITLE: ANCHOR BOLT PLAN
 DATE: 11/ 6/25 DET: JOB NO.: 25085 PG.: E-1



APPROVAL DRAWINGS

APPROVED AS DRAWN

APPROVED AS NOTED

NOT APPROVED

_____ INITIAL

Please Check And Approve All Dimensions
And Conditions. STANDARD STRUCTURES
Must Be Notified Of Any Changes.



SSI STANDARD STRUCTURES INC.
MANUFACTURER OF METAL BUILDINGS & COMPONENTS

P.O. BOX 1912
ODESSA, TX. 79760
1-800-240-0335

IAS
ACCREDITED™
Metal Building Systems
AC 472

APPROVAL & PERMIT

JOB NAME: Keystone Metal Buildings

PROJECT NAME: RCH Take Point Pump Station

JOB LOCATION: Terrell, TX 75160

DRAWING TITLE: ANCHOR BOLT DETAILS

DATE: 11/ 6/25 DET: JOB NO.: 25085 PG.: E-2

NOTES FOR REACTIONS

Building reactions are based on the following building data:
 Width (ft) = 37.8
 Length (ft) = 113.8
 Eave Height (ft) = 14.0 / 14.0
 Roof Slope (rise/12) = 2.00 / 2.00
 Roof Dead Load (psf) = 3.0
 Roof Live Load (psf) = 20.0
 Frame Live Load (psf) = 18.0
 Collateral Load (psf) = 5.0
 Snow Load (psf) = 12.6
 Minimum Snow (psf) = 15.0
 Wind Speed (mph) = 115.0
 Wind Code = 2024 IBC
 Exposure = C
 Closure = Enclosed
 Internal Wind Coeff = -0.18, +0.18
 Risk Category = III - High
 Importance - Seismic = 1.25
 Seismic Design Category = B
 Seismic Coeff (Sms) = 0.15

ENDWALL COLUMN REACTIONS(k)

Frame Line	Col Line	Max Horz	Max +Vert	Max -Vert	Horz	Vert	Load Id
10	C	-1.7	0.9	-2.4	0.1	0.1	(36)
10	C						(4)
10	C						(34)

(4) Dead+Collateral+0.7Snow+0.7Snow_Drift
 (34) 0.6Dead+0.6Wind_Pressure+0.6Wind_Long1
 (36) 0.6Dead+0.6Wind_Suction+0.6Wind_Long1

SOLDIER COLUMN REACTIONS(k)

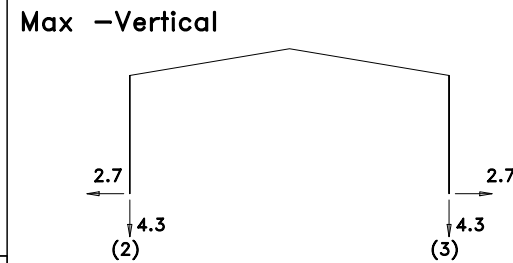
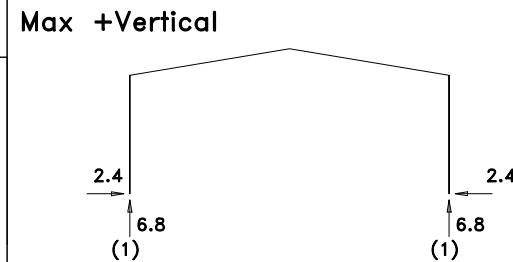
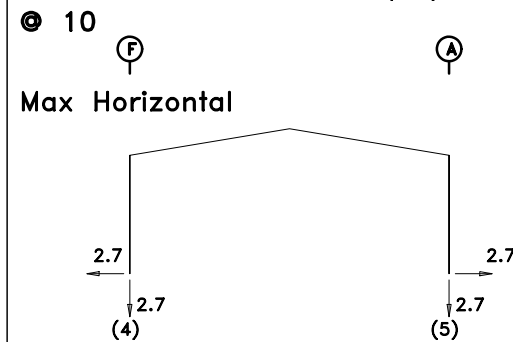
Frame Line	Col Line	Max Horz	Max +Vert	Max -Vert	Horz	Vert	Load Id
6	A	-0.6	0.9	-0.3	0.1	0.2	(23)
5	A						(4)
5	A						(22)

(22) 0.6Dead+0.6Wind_Pressure
 (4) Dead+Collateral+0.7Snow+0.7Snow_Drift
 (23) 0.6Dead+0.6Wind_Suction

BUILDING BRACING REACTIONS

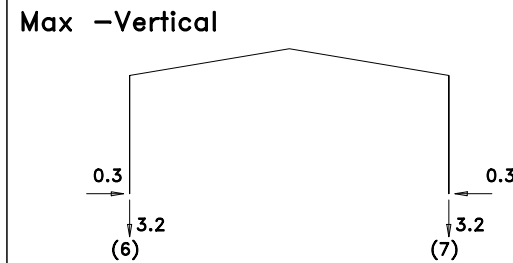
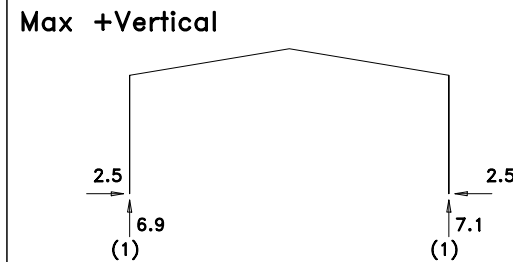
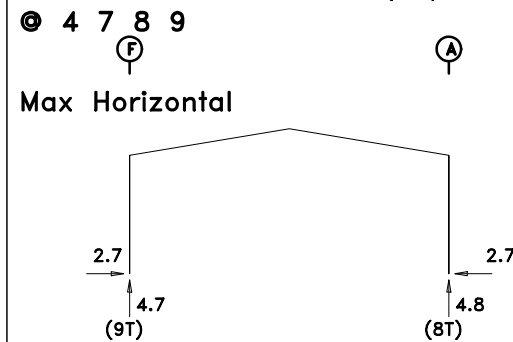
Wall Loc	Col Line	± Reactions(k)	0.6Wind	Seismic		
		Horz	Vert	Horz	Vert	
L_EW	1	Rigid frame at endwall				
F_SW	A	2,3	0.8	0.6	0.7	0.5
		8,9	0.8	0.6	0.7	0.5
R_EW	8	Rigid frame at endwall				
B_SW	F	9,8	0.8	0.6	0.5	0.4
		3,2	0.8	0.6	0.5	0.4

RIGID FRAME REACTIONS (k)



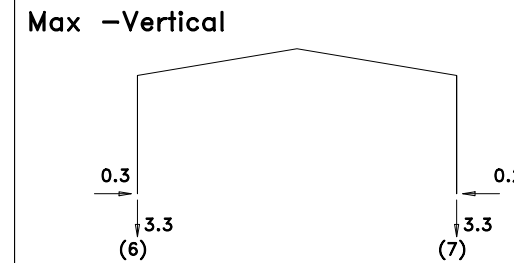
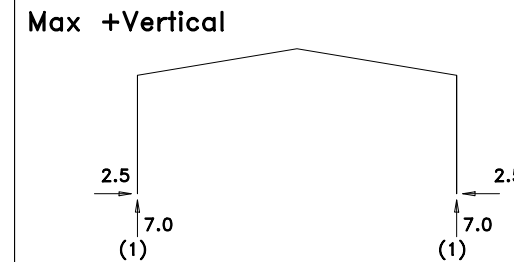
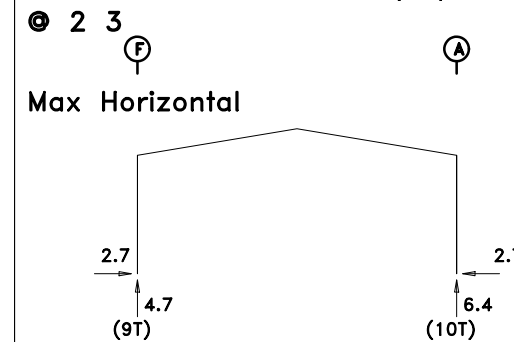
(1) Dead+Collateral+Live
 (2) 0.6Dead+0.6Wind_Left1
 (3) 0.6Dead+0.6Wind_Right1
 (4) 0.6Dead+0.6Wind_Left2
 (5) 0.6Dead+0.6Wind_Right2

RIGID FRAME REACTIONS (k)



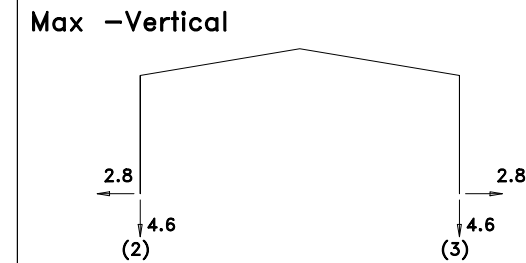
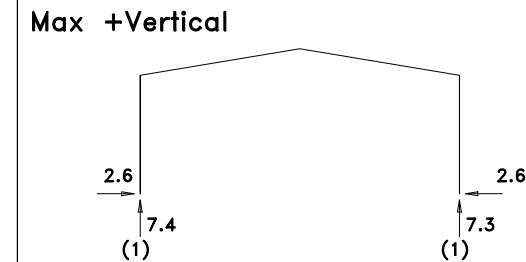
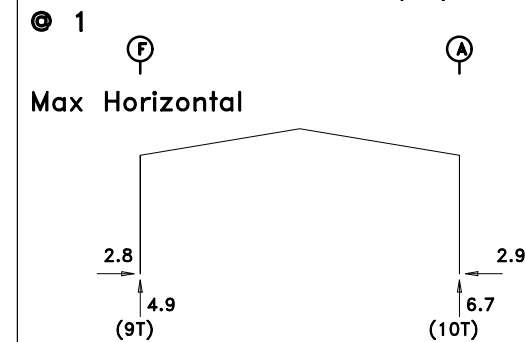
(1) Dead+Collateral+Live
 (6) 0.6Dead+0.6Wind_Long1L
 (7) 0.6Dead+0.6Wind_Long2L
 (8T) Dead+Collateral+0.75Live+0.45Wind_Left3
 (9T) Dead+Collateral+0.75Live+0.45Wind_Right3

RIGID FRAME REACTIONS (k)



(1) Dead+Collateral+Live
 (6) 0.6Dead+0.6Wind_Long1L
 (7) 0.6Dead+0.6Wind_Long2L
 (9T) Dead+Collateral+0.75Live+0.45Wind_Right3
 (10T) Dead+Collateral+0.75Live+0.45Wind_Left4

RIGID FRAME REACTIONS (k)



(1) Dead+Collateral+Live
 (2) 0.6Dead+0.6Wind_Left1
 (3) 0.6Dead+0.6Wind_Right1
 (9T) Dead+Collateral+0.75Live+0.45Wind_Right3
 (10T) Dead+Collateral+0.75Live+0.45Wind_Left4

APPROVAL DRAWINGS

- APPROVED AS DRAWN
- APPROVED AS NOTED
- NOT APPROVED

____ INITIAL

Please Check And Approve All Dimensions
 And Conditions. STANDARD STRUCTURES
 Must Be Notified Of Any Changes.



MANUFACTURER OF METAL BUILDINGS & COMPONENTS

P.O. BOX 1912
 ODESSA, TX. 79760
 1-800-240-0335

APPROVAL & PERMIT

JOB NAME: Keystone Metal Buildings
 PROJECT NAME: RCH Take Point Pump Station

JOB LOCATION: Terrell, TX 75160

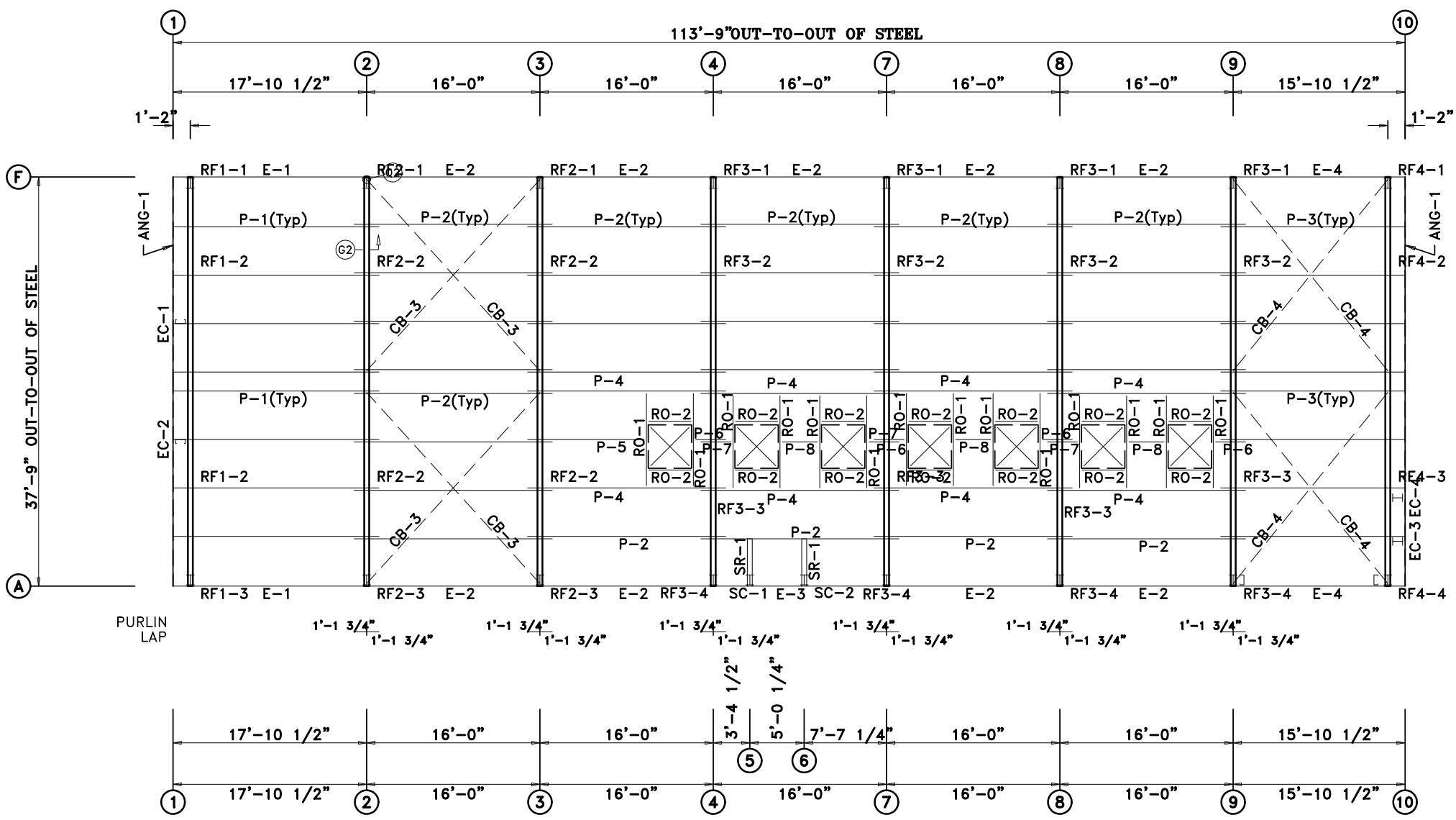
DRAWING TITLE: ANCHOR BOLT REACTIONS

DATE: 11/ 6/25 DET: JOB NO.: 25085 PG.: E-3



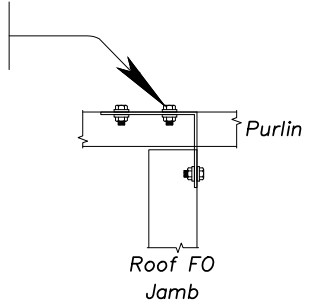
ACCREDITED™
 Metal Building Systems
 AC 472

MEMBER TABLE			
ROOF PLAN			
QUAN	MARK	PART	LENGTH
2	SR-1	8x35C16	4'-6 13/16"
14	RO-1	8x35C16	8'-5 5/16"
14	RO-2	8x35C16	4'-3 1/2"
8	P-1	8x25Z16	19'-0"
28	P-2	8x25Z16	18'-3 1/2"
8	P-3	8x25Z16	17'-0"
8	P-4	8x25Z12	18'-3 1/2"
1	P-5	8x25Z16	10'-7 3/4"
4	P-6	8x25Z16	2'-7 3/4"
3	P-7	8x25Z16	2'-7 3/4"
3	P-8	8x25Z16	3'-0"
2	E-1	82LEDS14	17'-10"
9	E-2	82LEDS14	15'-11 1/2"
1	E-3	82LEDS14	15'-11 1/2"
1	E-4	82LEDS14	15'-10"
4	CB-3	3/8_CBL	22'-0"
4	CB-4	3/8_CBL	21'-2"

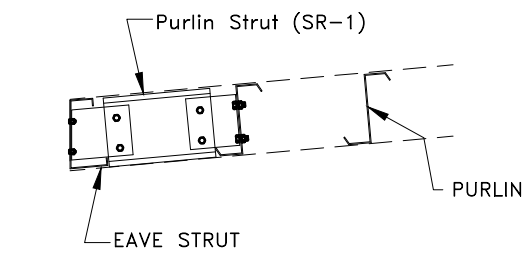


ROOF FRAMING PLAN

Provide (4) 1/2" A307 bolts for attachment of roof framed opening jamb to purlin;



1 Roof Framed Opening Connection Detail



1 Purlin Strut Above Soldier Column

APPROVAL DRAWINGS

- APPROVED AS DRAWN
- APPROVED AS NOTED
- NOT APPROVED

____ INITIAL

Please Check And Approve All Dimensions And Conditions. STANDARD STRUCTURES Must Be Notified Of Any Changes.

SSI STANDARD STRUCTURES INC.
MANUFACTURER OF METAL BUILDINGS & COMPONENTS

P.O. BOX 1912
ODESSA, TX. 79760
1-800-240-0335

IAS

ACCREDITED™
Metal Building Systems
AC 472

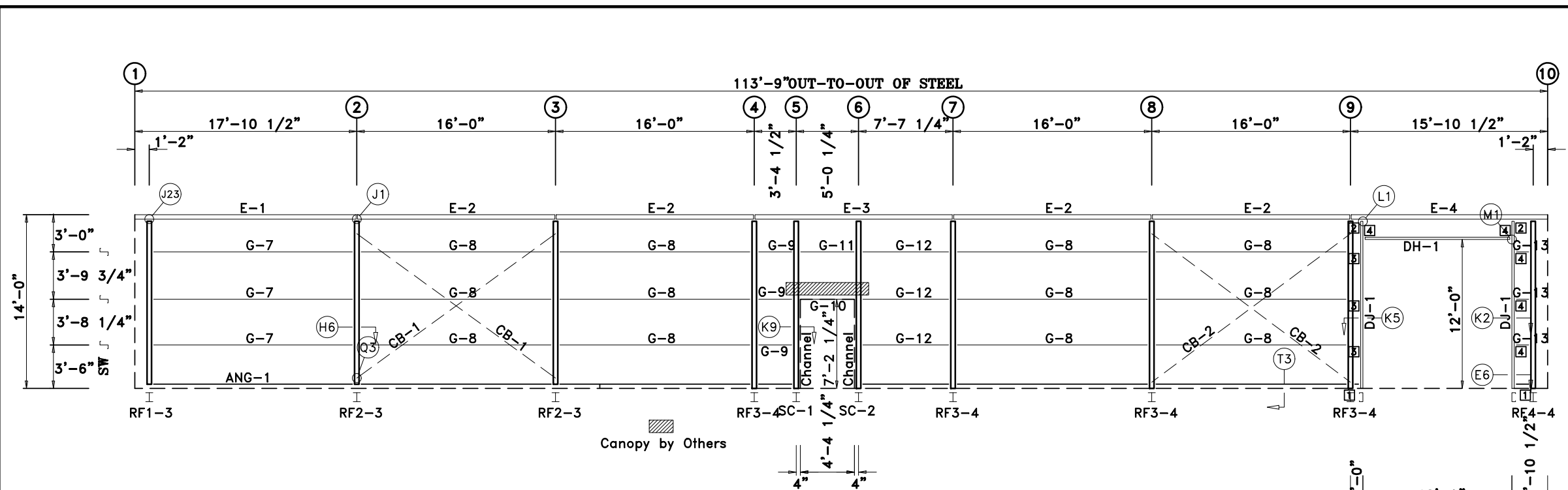
APPROVAL & PERMIT

JOB NAME: Keystone Metal Buildings
PROJECT NAME: RCH Take Point Pump Station

JOB LOCATION: Terrell, TX 75160

DRAWING TITLE: ROOF FRAMING PLAN

DATE: 11/ 6/25 DET: JOB NO.: 25085 PG.: E-4



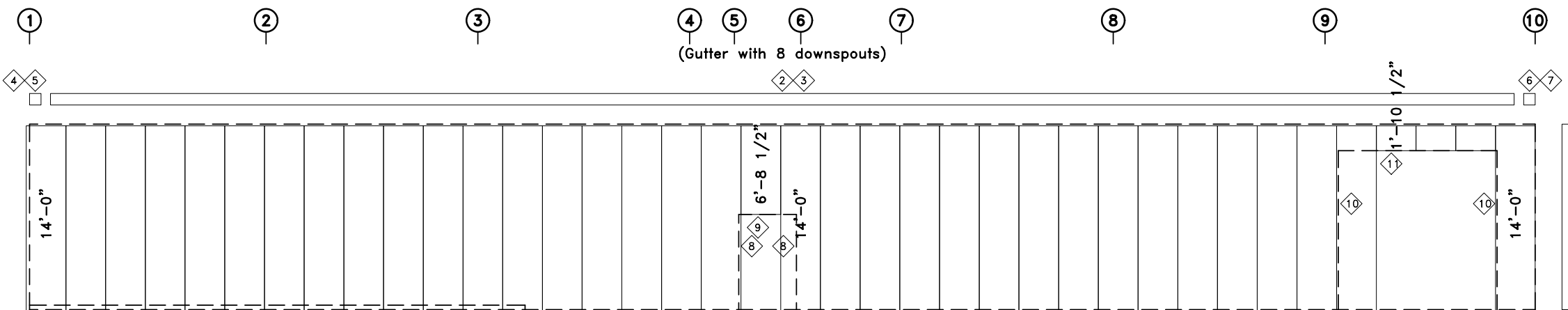
SIDEWALL FRAMING: FRAME LINE A

TRIM TABLE				
FRAME LINE A				
ID	QUAN	PART	LENGTH	DETAIL
1	2	CRNTR243	14'-1"	TRIM #2
2	5	GUTT243	23'-0"	TRIM #5
3	12	BACKSPLS	10'-3"	
4	1	SGUTENDL	6"	
5	1	SCRNBX-L	6"	TRIM #16
6	1	SGUTENDR	6"	TRIM #16
7	1	SCRNBX-R	6"	TRIM #16
8	2	JMBTR243	7'-5"	TRIM #6
9	1	HEADR243	4'-9"	TRIM #8
10	2	JMBTR243	12'-2"	TRIM #6
11	1	HEADR243	12'-4"	TRIM #8

BOLT TABLE				
FRAME LINE A				
LOCATION	QUAN	TYPE	DIA	LENGTH
SC-1	2	A325	1/2"	1 1/4"
SC-2	2	A325	1/2"	1 1/4"

MEMBER TABLE				
FRAME LINE A				
QUAN	MARK	PART	LENGTH	
1	SC-1	W8X10	13'-5 3/16"	
1	SC-2	W8X10	13'-5 3/16"	
2	DJ-1	8x35C16	13'-3 5/8"	
1	DH-1	8x35C16	12'-0"	
1	E-1	82LEDS14	17'-10"	
4	E-2	82LEDS14	15'-11 1/2"	
1	E-3	82LEDS14	15'-11 1/2"	
1	E-4	82LEDS14	15'-10"	
3	G-7	8x25Z16	16'-4"	
12	G-8	8x25Z16	15'-7 1/2"	
3	G-9	8x25Z16	3'-0"	
1	G-10	8x25C16	4'-7 3/4"	
1	G-11	8x25Z16	4'-7 3/4"	
3	G-12	8x25Z16	7'-2 3/4"	
3	G-13	8x25Z16	1'-2 1/2"	
2	CB-1	0.75_ROD	20'-11"	
2	CB-2	0.75_ROD	21'-2"	

CONNECTION PLATES				
FRAME LINE A				
ID	QUAN	MARK	PART	
1	2	C-104		
2	2	C11-8x2		
3	3	b3		
4	5	C-5		



SIDEWALL SHEETING & TRIM: FRAME LINE A

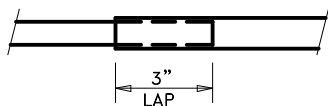
PANELS: 26 Ga. PBR - Need Color Walls

APPROVAL DRAWINGS

- APPROVED AS DRAWN
- APPROVED AS NOTED
- NOT APPROVED

____ INITIAL

Please Check And Approve All Dimensions
And Conditions. STANDARD STRUCTURES
Must Be Notified Of Any Changes.



ALL TRIM LAPS ARE TO BE 3" LONG

NOTE: If Trim Lap Is More Than 3" Long, The Trim May Not Cover The Required Coverage Length.

SSI STANDARD STRUCTURES INC.
MANUFACTURER OF METAL BUILDINGS & COMPONENTS
P.O. BOX 1912
ODESSA, TX. 79760
1-800-240-0335



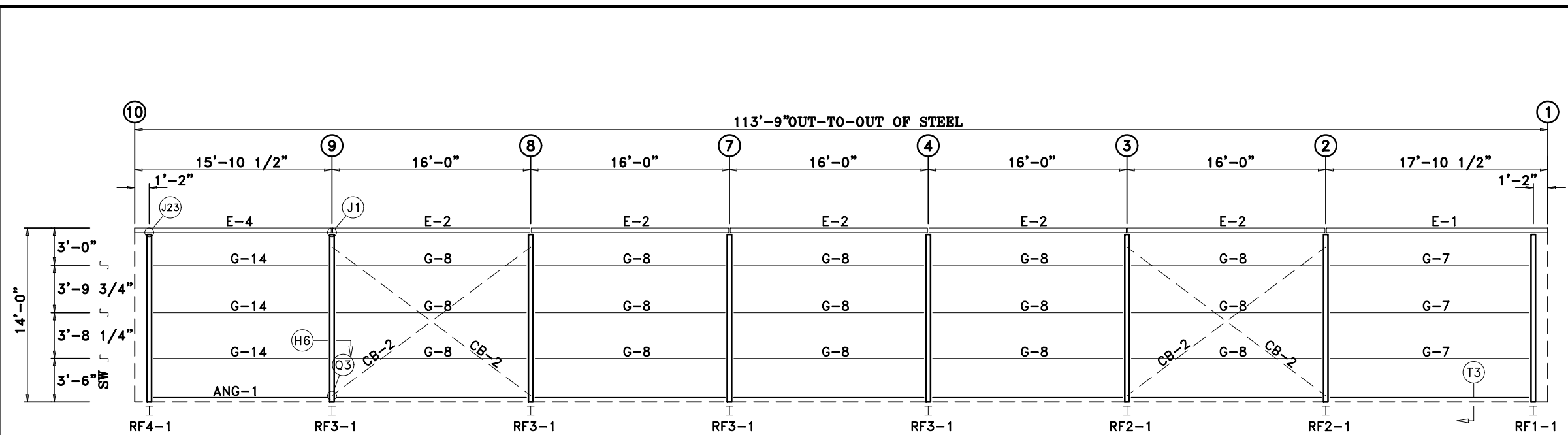
APPROVAL & PERMIT

JOB NAME: Keystone Metal Buildings
PROJECT NAME: RCH Take Point Pump Station

JOB LOCATION: Terrell, TX 75160

DRAWING TITLE: *SIDEWALL DRAWING*

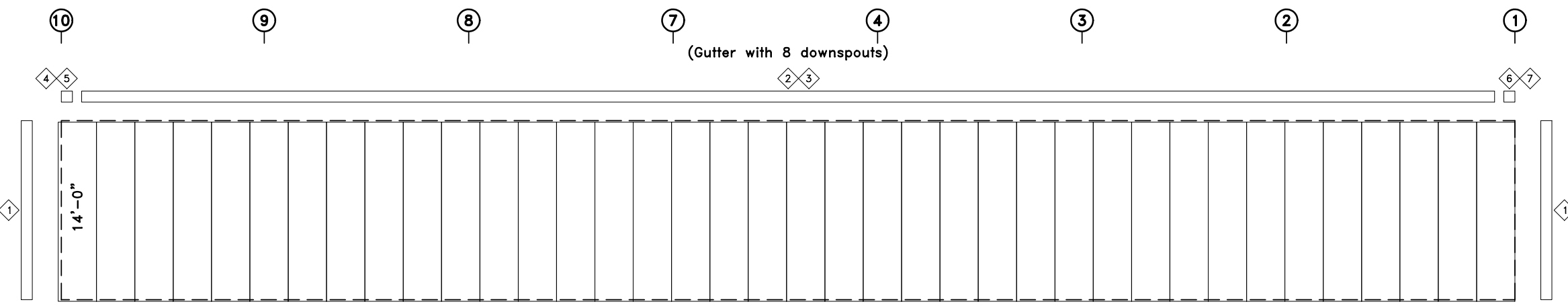
DATE: 11/ 6/25 DET: JOB NO.: 25085 PG.: E-6



SIDEWALL FRAMING: FRAME LINE F

TRIM TABLE				
FRAME LINE F				
ID	QUAN	PART	LENGTH	DETAIL
1	2	CRNTR243	14'-1"	TRIM #2
2	5	GUTT243	23'-0"	TRIM #5
3	12	BACKSPLS	10'-3"	
4	1	SGUTENDL	6"	
5	1	SCRNBX-L	6"	TRIM #16
6	1	SGUTENDR	6"	TRIM #16
7	1	SCRNBX-R	6"	TRIM #16

MEMBER TABLE				
FRAME LINE F				
QUAN	MARK	PART	LENGTH	
1	E-1	82LEDS14	17'-10"	
5	E-2	82LEDS14	15'-11 1/2"	
1	E-4	82LEDS14	15'-10"	
3	G-7	8x25Z16	16'-4"	
15	G-8	8x25Z16	15'-7 1/2"	
3	G-14	8x25Z16	14'-4"	
4	CB-2	0.75_ROD	21'-2"	



SIDEWALL SHEETING & TRIM: FRAME LINE F

PANELS: 26 Ga. PBR - Need Color Walls

APPROVAL DRAWINGS

- APPROVED AS DRAWN
- APPROVED AS NOTED
- NOT APPROVED

____ INITIAL

Please Check And Approve All Dimensions And Conditions. STANDARD STRUCTURES Must Be Notified Of Any Changes.

SSI STANDARD STRUCTURES INC.
 MANUFACTURER OF METAL BUILDINGS & COMPONENTS
 P.O. BOX 1912
 ODESSA, TX. 79760
 1-800-240-0335

IAS
 ACCREDITED™
 Metal Building Systems
 AC 472

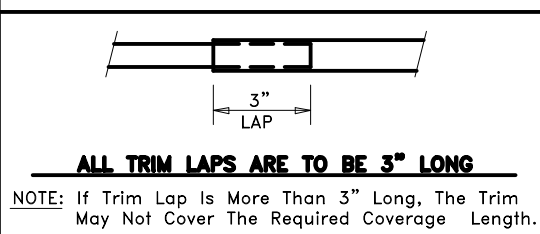
APPROVAL & PERMIT

JOB NAME: Keystone Metal Buildings
 PROJECT NAME: RCH Take Point Pump Station

JOB LOCATION: Terrell, TX 75160

DRAWING TITLE: *SIDEWALL DRAWING*

DATE: 11/ 6/25 DET: JOB NO.: 25085 PG.: E-7

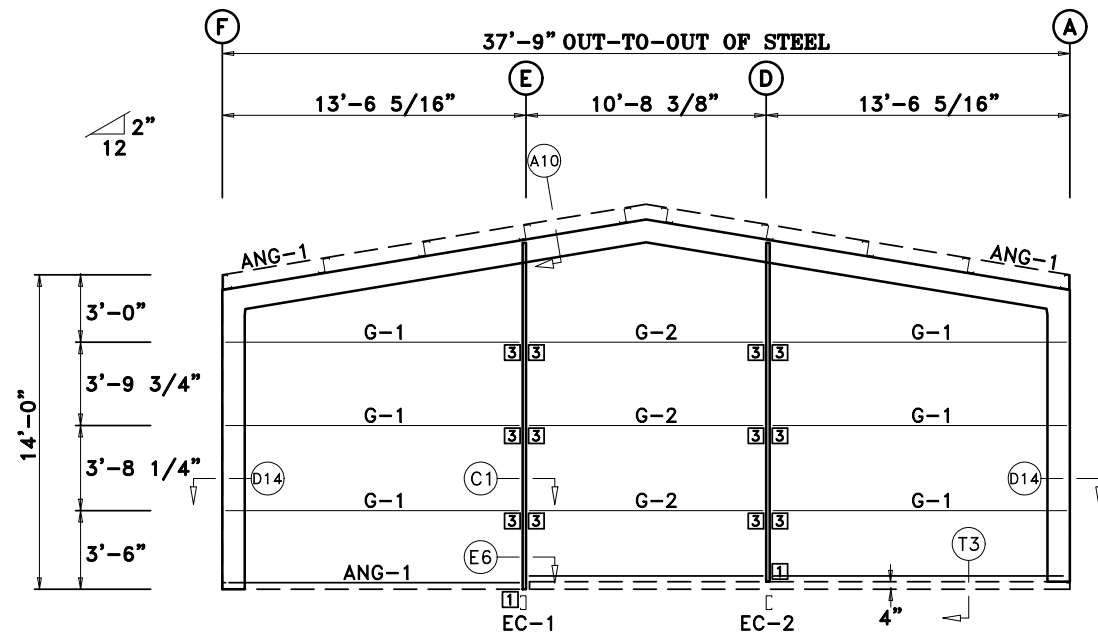


TRIM TABLE				
FRAME LINE 1				
ID	QUAN	PART	LENGTH	DETAIL
1	2	RAKER243	19'-8"	TRIM #3
2	1	PEAKBX-R	1'-2"	TRIM #15

BOLT TABLE				
FRAME LINE 1				
LOCATION	QUAN	TYPE	DIA	LENGTH
Columns/Raf	4	A325	1/2"	1 1/4"

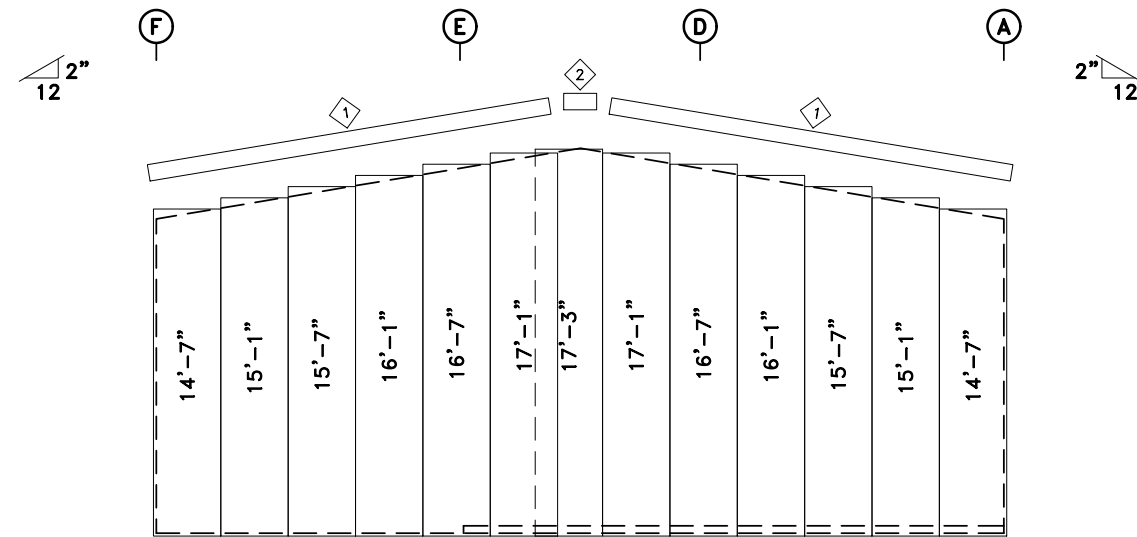
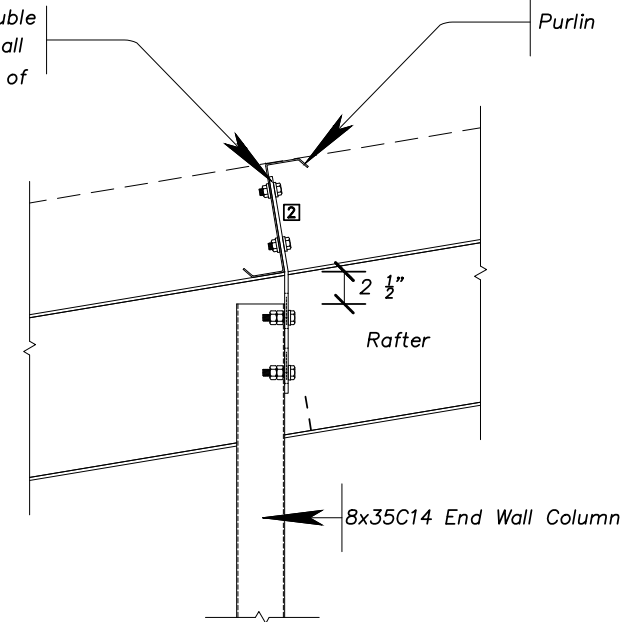
MEMBER TABLE				
FRAME LINE 1				
QUAN	MARK	PART	LENGTH	
1	EC-1	8x35C14	15'-3 7/8"	
1	EC-2	8x35C14	14'-11 7/8"	
6	G-1	8x25Z16	13'-2 5/16"	
3	G-2	8x25Z16	10'-7 7/8"	

CONNECTION PLATES			
FRAME LINE 1			
ID	QUAN	MARK/PART	
1	2	C-104	
3	12	C-5	



ENDWALL FRAMING: FRAME LINE 1

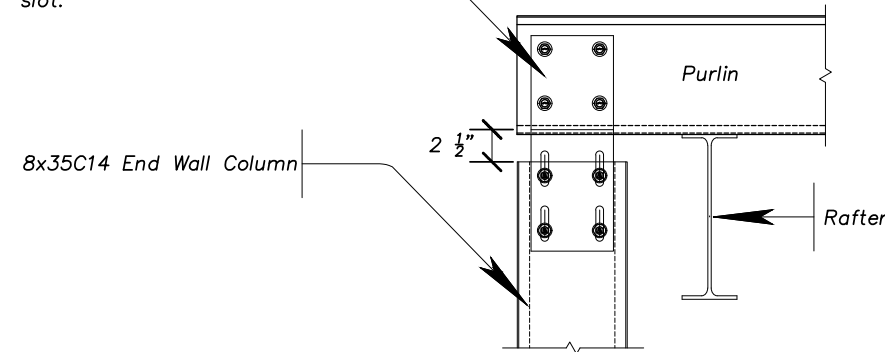
Provide bent 1/4" clip with (4) 1/2" A307 bolts to bolt to purlin, and (4) 1/2" A325 bolts with double nuts to bolt to endwall column. Bent clip shall have 2" slots with bolts set 1/2" from bottom of slot.



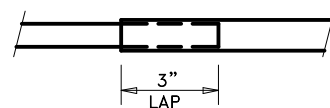
ENDWALL SHEETING & TRIM: FRAME LINE 1

PANELS: 26 Ga. PBR - Need Color Walls

Provide bent 1/4" clip with (4) 1/2" A307 bolts to bolt to purlin, and (4) 1/2" A325 bolts with double nuts to bolt to endwall column. Bent clip shall have 2" slots with bolts set 1/2" from bottom of slot.



3 Roof Framed Opening Connection Detail



ALL TRIM LAPS ARE TO BE 3" LONG

NOTE: If Trim Lap Is More Than 3" Long, The Trim May Not Cover The Required Coverage Length.

APPROVAL DRAWINGS

- APPROVED AS DRAWN
- APPROVED AS NOTED
- NOT APPROVED

____ INITIAL

Please Check And Approve All Dimensions And Conditions. STANDARD STRUCTURES Must Be Notified Of Any Changes.

SSI STANDARD STRUCTURES INC.
MANUFACTURER OF METAL BUILDINGS & COMPONENTS

P.O. BOX 1912
ODESSA, TX. 79760
1-800-240-0335



ACCREDITED™
Metal Building Systems
AC 472

APPROVAL & PERMIT

JOB NAME: Keystone Metal Buildings
PROJECT NAME: RCH Take Point Pump Station

JOB LOCATION: Terrell, TX 75160

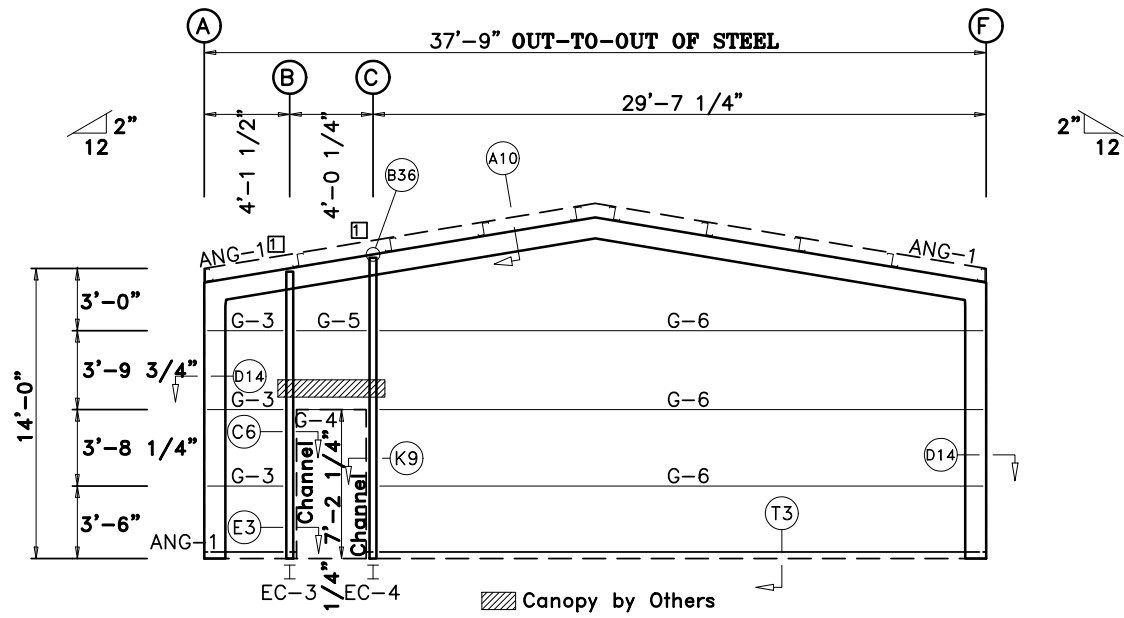
DRAWING TITLE: *ENDWALL DRAWING*

DATE: 11/ 6/25

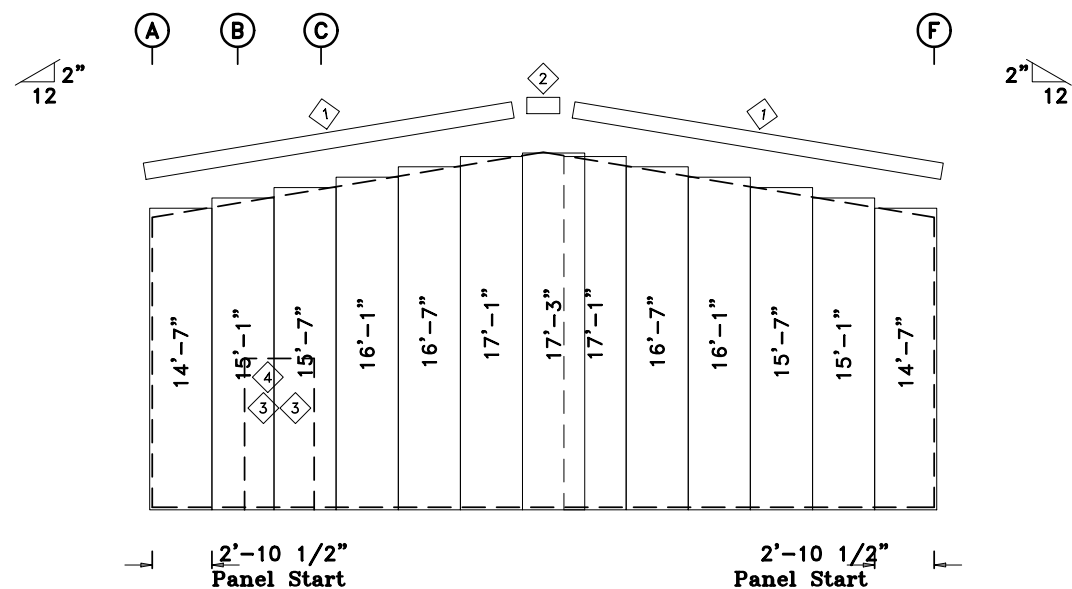
DET:

JOB NO.: 25085

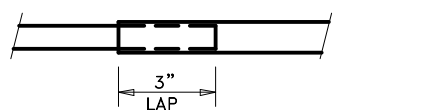
PG.: E-8



ENDWALL FRAMING: FRAME LINE 10



ENDWALL SHEETING & TRIM: FRAME LINE 10
 PANELS: 26 Ga. PBR - Need Color Walls



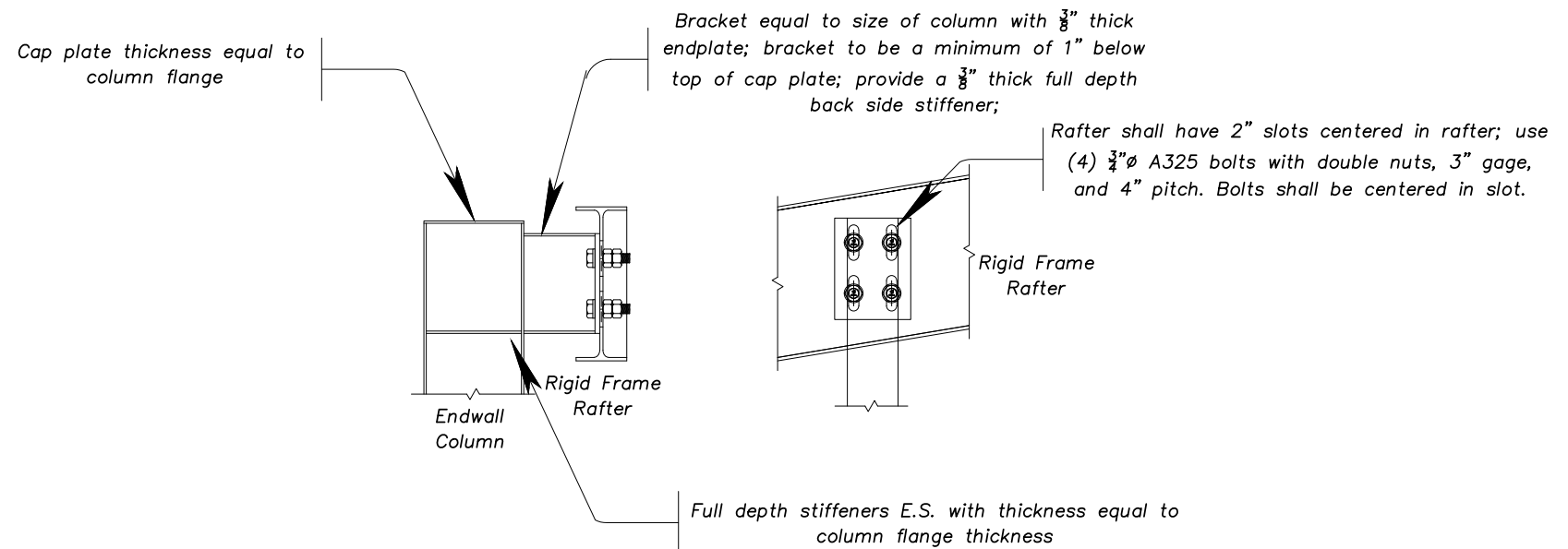
NOTE: If Trim Lap Is More Than 3" Long, The Trim May Not Cover The Required Coverage Length.

TRIM TABLE				
FRAME LINE 10				
ID	QUAN	PART	LENGTH	DETAIL
1	2	RAKER243	19'-8"	TRIM #3
2	1	PEAKBX-R	1'-2"	TRIM #15
3	2	JMBTR243	7'-5"	TRIM #6
4	1	HEADR243	3'-9"	TRIM #8

BOLT TABLE				
FRAME LINE 10				
LOCATION	QUAN	TYPE	DIA	LENGTH
Columns/Raf	4	A325	1/2"	1 1/4"

MEMBER TABLE				
FRAME LINE 10				
QUAN	MARK	PART	LENGTH	
1	EC-3	W8X10	13'-9 1/8"	
1	EC-4	W8X10	14'-5 1/8"	
3	G-3	8x25Z16	3'-11"	
1	G-4	8x25C16	3'-7 3/4"	
1	G-5	8x25Z16	3'-7 3/4"	
3	G-6	8x25Z12	29'-4 3/4"	

CONNECTION PLATES				
FRAME LINE 10				
ID	QUAN	MARK/PART		
1	2	n2		



4 Endwall Column Connection Detail On Frame Line #1

APPROVAL DRAWINGS

- APPROVED AS DRAWN
- APPROVED AS NOTED
- NOT APPROVED

____ INITIAL

Please Check And Approve All Dimensions And Conditions. STANDARD STRUCTURES Must Be Notified Of Any Changes.

SSI STANDARD STRUCTURES INC.
 MANUFACTURER OF METAL BUILDINGS & COMPONENTS

P.O. BOX 1912
 ODESSA, TX. 79760
 1-800-240-0335



ACCREDITED™
 Metal Building Systems
 AC 472

APPROVAL & PERMIT

JOB NAME: Keystone Metal Buildings
 PROJECT NAME: RCH Take Point Pump Station

JOB LOCATION: Terrell, TX 75160

DRAWING TITLE: *ENDWALL DRAWING*

DATE: 11/ 6/25 DET: JOB NO.: 25085 PG.: E-9

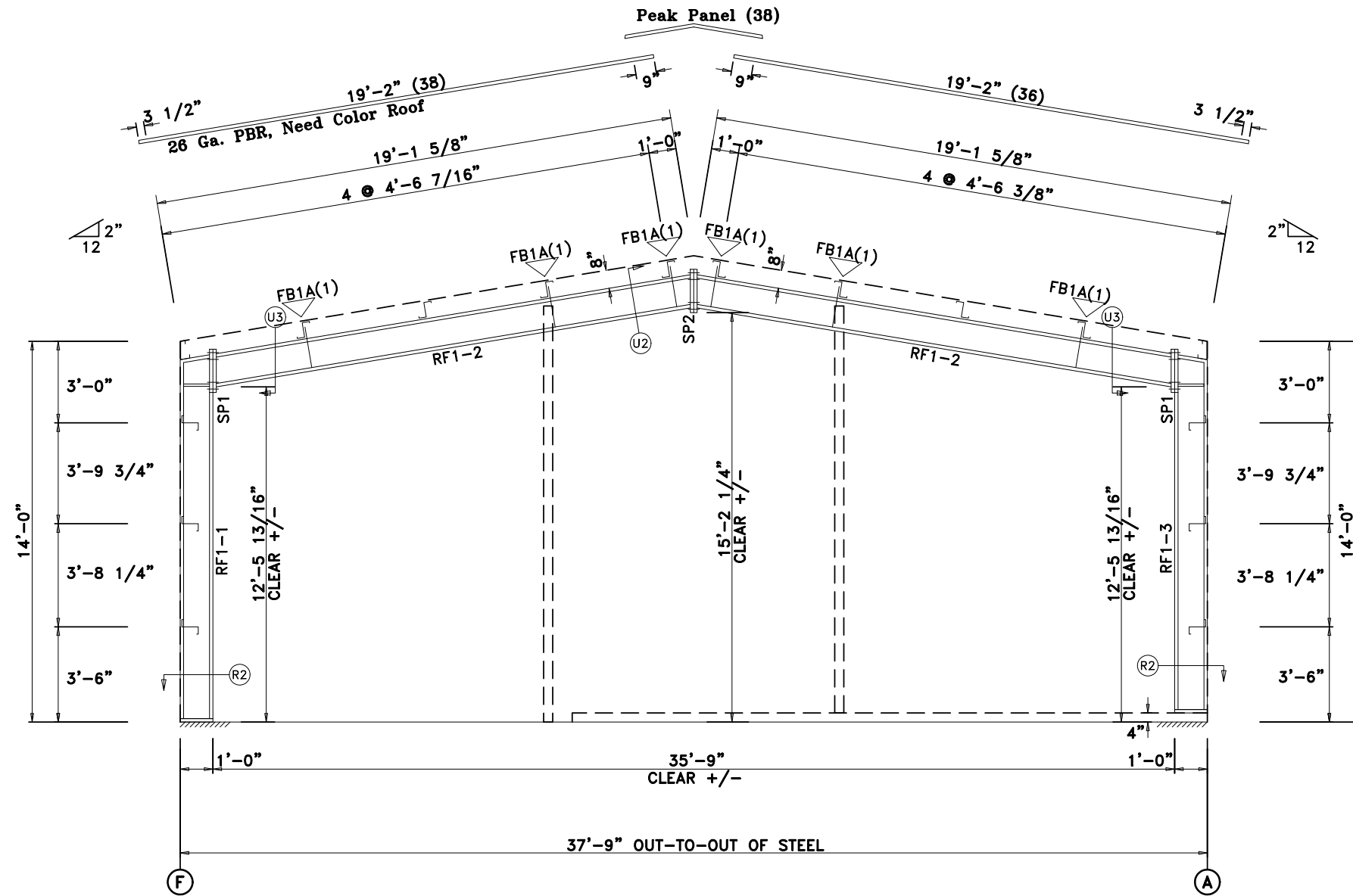
SPLICE PLATE & BOLT TABLE

Mark	Qty Top	Qty Bot	Int	Type	Dia	Length	Width	Thick	Length
SP1	4	4	0	A325	3/4"	2"	6"	1/2"	1'-6 1/2"
SP2	4	4	0	A325	5/8"	1 3/4"	6"	3/8"	1'-6 1/2"

MEMBER SIZE TABLE

MARK	MEMBER	LENGTH
RF1-1	W12X16	13'-3 7/8"
RF1-2	W12X16	18'-1 1/4"
RF1-3	W12X16	12'-11 7/8"

▽ FLANGE BRACES: Both Sides(U.N.)
 FBxxA(1)
 A - F2X2X14g



RIGID FRAME SECTION: FRAME LINE 1

APPROVAL DRAWINGS

- APPROVED AS DRAWN
- APPROVED AS NOTED
- NOT APPROVED

____ INITIAL

Please Check And Approve All Dimensions
 And Conditions. STANDARD STRUCTURES
 Must Be Notified Of Any Changes.

SSI STANDARD STRUCTURES INC.
 MANUFACTURER OF METAL BUILDINGS & COMPONENTS

P.O. BOX 1912
 ODESSA, TX. 79760
 1-800-240-0335



ACCREDITED™
 Metal Building Systems
 AC 472

APPROVAL & PERMIT

JOB NAME: Keystone Metal Buildings
 PROJECT NAME: RCH Take Point Pump Station

JOB LOCATION: Terrell, TX 75160

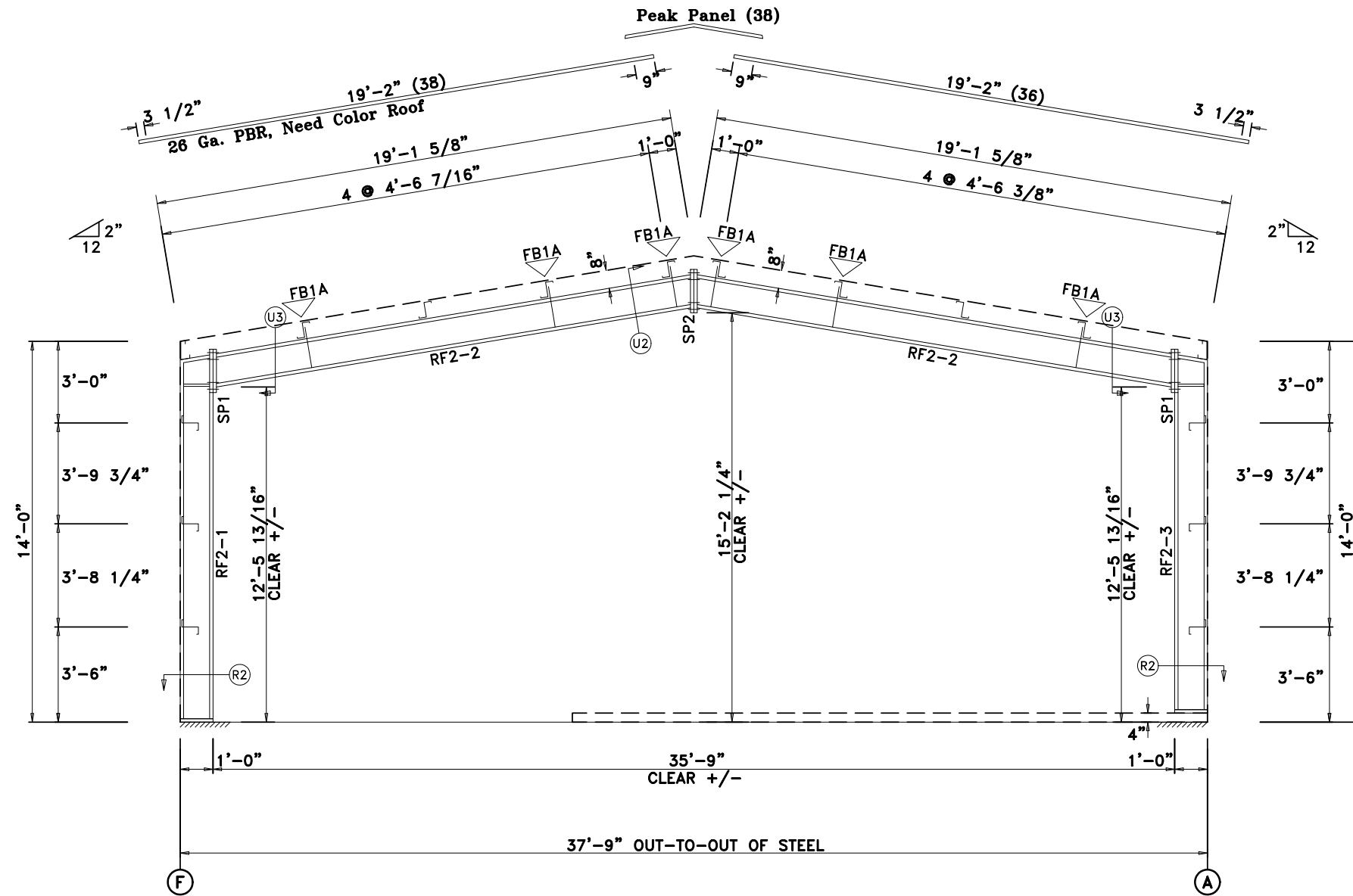
DRAWING TITLE: RIGID FRAME SECTION

DATE: 11/ 6/25 DET: JOB NO.: 25085 PG.: E-10

SPLICE PLATE & BOLT TABLE									
Mark	Qty Top	Qty Bot	Int	Type	Dia	Length	Width	Thick	Length
SP1	4	4	0	A325	3/4"	2"	6"	1/2"	1'-6 1/2"
SP2	4	4	0	A325	5/8"	1 3/4"	6"	3/8"	1'-6 1/2"

MEMBER SIZE TABLE		
MARK	MEMBER	LENGTH
RF2-1	W12X16	13'-3 7/8"
RF2-2	W12X16	18'-1 1/4"
RF2-3	W12X16	12'-11 7/8"

▽ FLANGE BRACES: Both Sides(U.N.)
 FBxxA(1)
 A - F2X2X14g



RIGID FRAME SECTION: FRAME LINE 2 3

APPROVAL DRAWINGS	
<input type="checkbox"/>	APPROVED AS DRAWN
<input type="checkbox"/>	APPROVED AS NOTED
<input type="checkbox"/>	NOT APPROVED
_____ INITIAL	
Please Check And Approve All Dimensions And Conditions. STANDARD STRUCTURES Must Be Notified Of Any Changes.	



SSI STANDARD STRUCTURES INC.
 MANUFACTURER OF METAL BUILDINGS & COMPONENTS
 P.O. BOX 1912
 ODESSA, TX. 79760
 1-800-240-0335

IAS
 ACCREDITED™
 Metal Building Systems
 AC 472

APPROVAL & PERMIT			
JOB NAME: Keystone Metal Buildings			
PROJECT NAME: RCH Take Point Pump Station			
JOB LOCATION: Terrell, TX 75160			
DRAWING TITLE: RIGID FRAME SECTION			
DATE: 11/ 6/25	DET:	JOB NO.: 25085	PG.: E-11

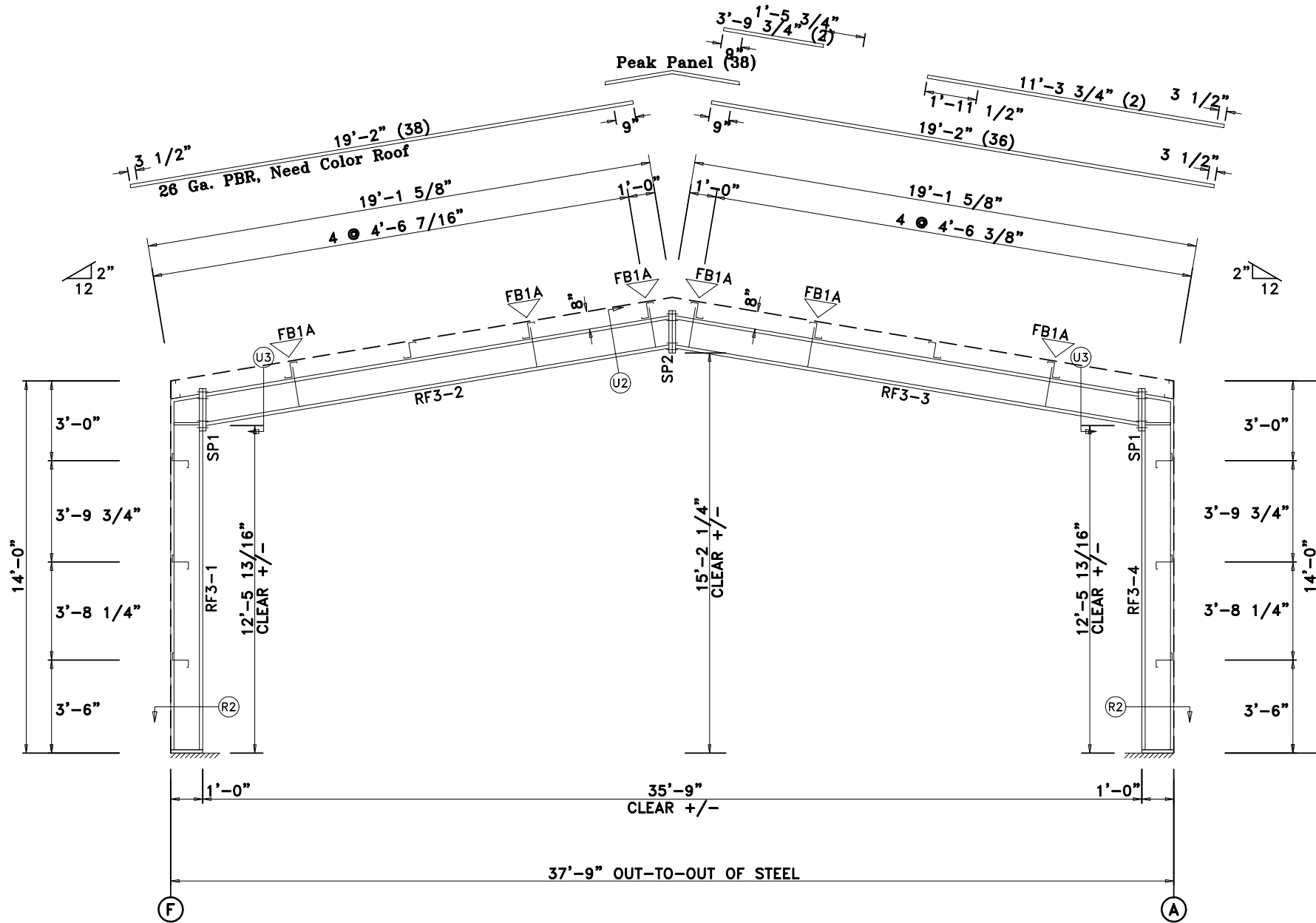
SPLICE PLATE & BOLT TABLE

Mark	Qty Top	Qty Bot	Int	Type	Dia	Length	Width	Thick	Length
SP1	4	4	0	A325	3/4"	2"	6"	1/2"	1'-6 1/2"
SP2	4	4	0	A325	5/8"	1 3/4"	6"	3/8"	1'-6 1/2"

MEMBER SIZE TABLE

MARK	MEMBER	LENGTH
RF3-1	W12X16	13'-3 7/8"
RF3-2	W12X16	18'-1 1/4"
RF3-3	W12X16	18'-1 1/4"
RF3-4	W12X16	13'-3 7/8"

▽ FLANGE BRACES: Both Sides(U.N.)
 FBxxA(1)
 A - F2X2X14g



RIGID FRAME SECTION: FRAME LINE 4 7 8 9

APPROVAL DRAWINGS

- APPROVED AS DRAWN
- APPROVED AS NOTED
- NOT APPROVED

____ INITIAL

Please Check And Approve All Dimensions
 And Conditions. STANDARD STRUCTURES
 Must Be Notified Of Any Changes.

SSI STANDARD STRUCTURES INC.
 MANUFACTURER OF METAL BUILDINGS & COMPONENTS

P.O. BOX 1912
 ODESSA, TX. 79760
 1-800-240-0335



ACCREDITED™
 Metal Building Systems
 AC 472

APPROVAL & PERMIT

JOB NAME: Keystone Metal Buildings
 PROJECT NAME: RCH Take Point Pump Station

JOB LOCATION: Terrell, TX 75160

DRAWING TITLE: RIGID FRAME SECTION

DATE: 11/ 6/25 DET: JOB NO.: 25085 PG.: E-13

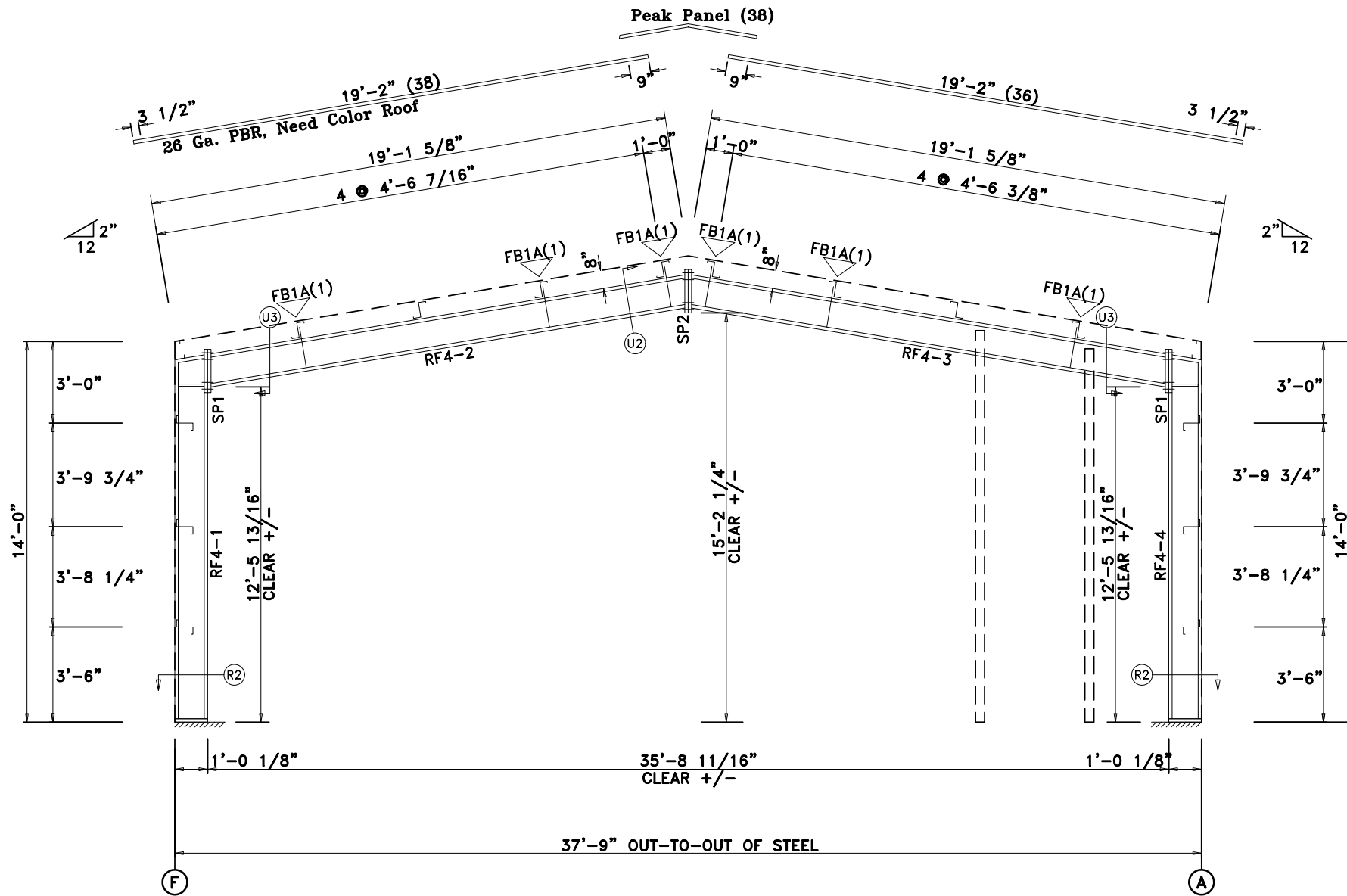
SPLICE PLATE & BOLT TABLE

Mark	Qty Top	Qty Bot	Int	Type	Dia	Length	Width	Thick	Length
SP1	4	4	0	A325	3/4"	2"	6"	1/2"	1'-6 1/2"
SP2	4	4	0	A325	5/8"	1 3/4"	6"	3/8"	1'-6 1/2"

MEMBER SIZE TABLE

MARK	MEMBER	LENGTH
RF4-1	W12X19	13'-3 7/8"
RF4-2	W12X16	18'-1 1/8"
RF4-3	W12X16	18'-1 1/8"
RF4-4	W12X19	13'-3 7/8"

▽ FLANGE BRACES: Both Sides(U.N.)
 FBxxA(1)
 A - F2X2X14g



RIGID FRAME SECTION: FRAME LINE 10

APPROVAL DRAWINGS

- APPROVED AS DRAWN
- APPROVED AS NOTED
- NOT APPROVED

____ INITIAL

Please Check And Approve All Dimensions
 And Conditions. STANDARD STRUCTURES
 Must Be Notified Of Any Changes.

SSI STANDARD STRUCTURES INC.
 MANUFACTURER OF METAL BUILDINGS & COMPONENTS

P.O. BOX 1912
 ODESSA, TX. 79760
 1-800-240-0335



ACCREDITED™
 Metal Building Systems
 AC 472

APPROVAL & PERMIT

JOB NAME: Keystone Metal Buildings
 PROJECT NAME: RCH Take Point Pump Station

JOB LOCATION: Terrell, TX 75160

DRAWING TITLE: RIGID FRAME SECTION

DATE: 11/ 6/25 DET: JOB NO.: 25085 PG.: E-13