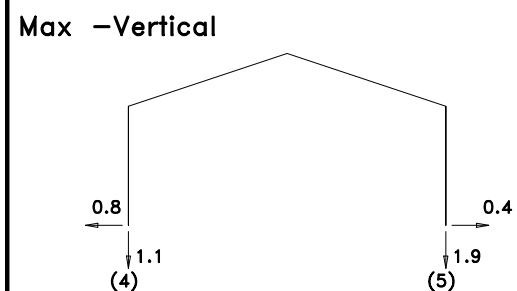
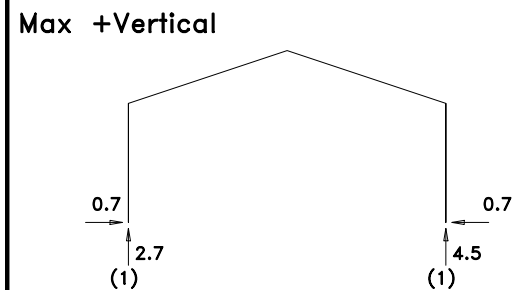
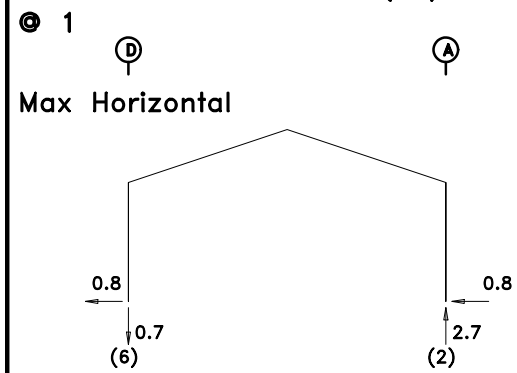


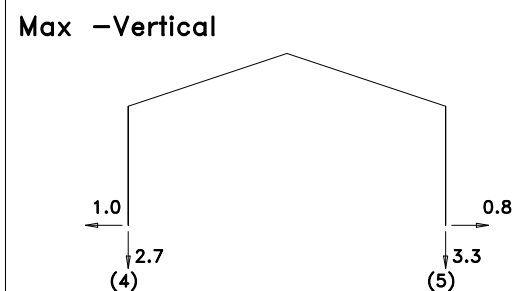
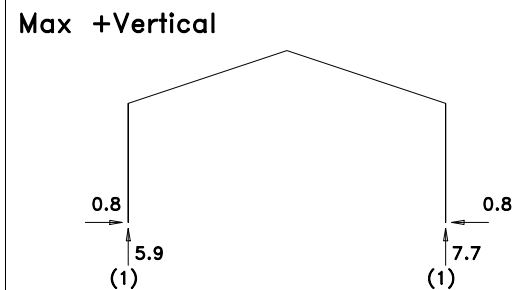
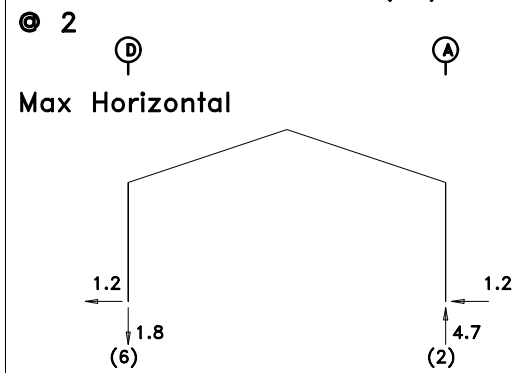
Job# 26056
Final Design

RIGID FRAME REACTIONS (k)



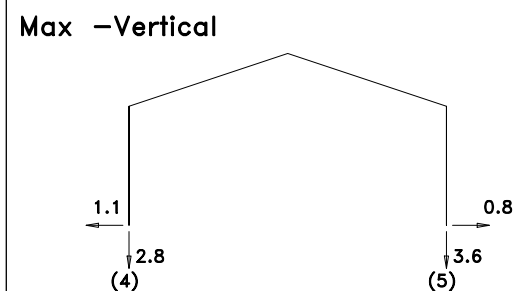
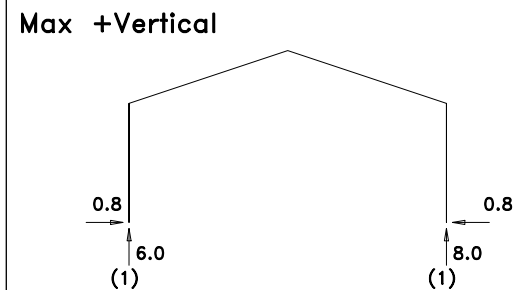
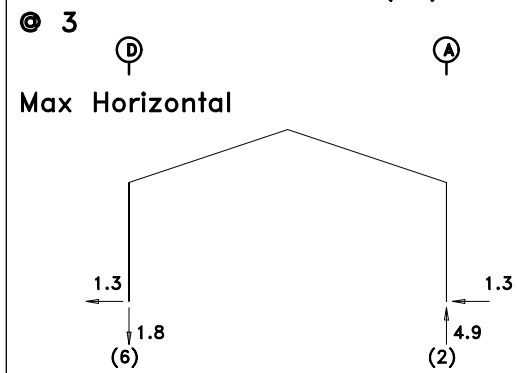
- (1) Dead+Collateral+Live
- (2) Dead+Collateral+0.75Live+0.45Wind_Left1
- (4) 0.6Dead+0.6Wind_Left1
- (5) 0.6Dead+0.6Wind_Right1
- (6) 0.6Dead+0.6Wind_Left2

RIGID FRAME REACTIONS (k)



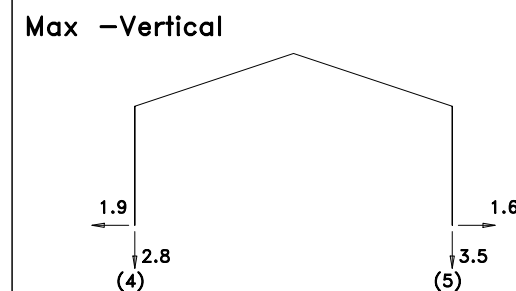
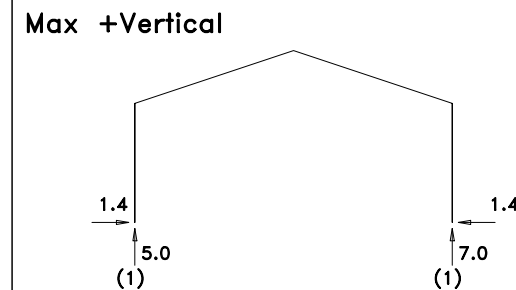
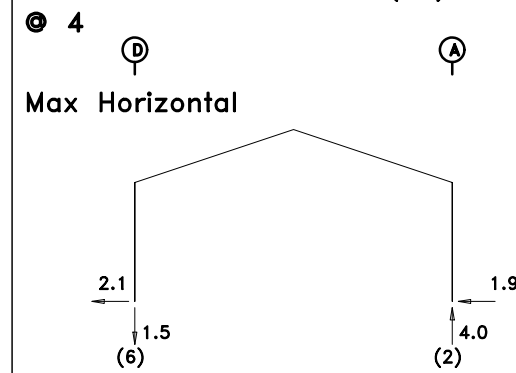
- (1) Dead+Collateral+Live
- (2) Dead+Collateral+0.75Live+0.45Wind_Left1
- (4) 0.6Dead+0.6Wind_Left1
- (5) 0.6Dead+0.6Wind_Right1
- (6) 0.6Dead+0.6Wind_Left2

RIGID FRAME REACTIONS (k)



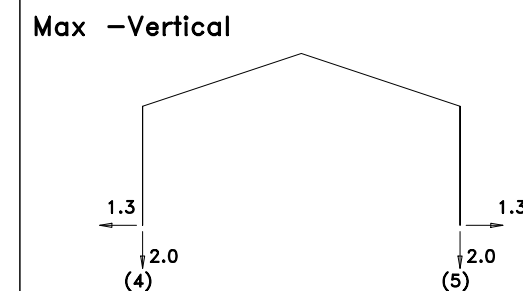
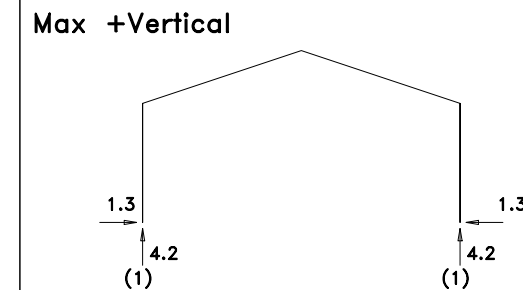
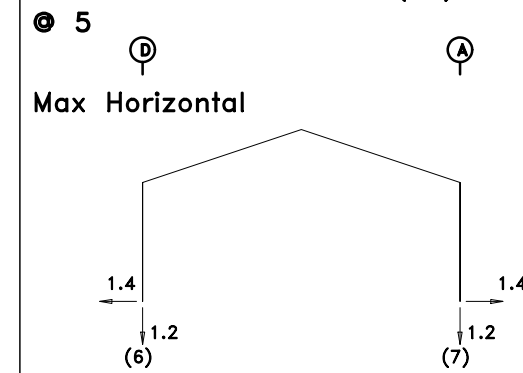
- (1) Dead+Collateral+Live
- (2) Dead+Collateral+0.75Live+0.45Wind_Left1
- (4) 0.6Dead+0.6Wind_Left1
- (5) 0.6Dead+0.6Wind_Right1
- (6) 0.6Dead+0.6Wind_Left2

RIGID FRAME REACTIONS (k)



- (1) Dead+Collateral+Live
- (2) Dead+Collateral+0.75Live+0.45Wind_Left1
- (4) 0.6Dead+0.6Wind_Left1
- (5) 0.6Dead+0.6Wind_Right1
- (6) 0.6Dead+0.6Wind_Left2

RIGID FRAME REACTIONS (k)



- (1) Dead+Collateral+Live
- (4) 0.6Dead+0.6Wind_Left1
- (5) 0.6Dead+0.6Wind_Right1
- (6) 0.6Dead+0.6Wind_Left2
- (7) 0.6Dead+0.6Wind_Right2

WIND BENT REACTIONS

Wall Loc	Line	Col Line	± Reactions			
			0.6Wind(k)		Seismic(k)	
			Horz	Vert	Horz	Vert
F_SW	A	1	0.7	1.4	0.1	0.1
F_SW	A	2	0.7	1.4	0.1	0.1
B_SW	D	2	0.7	1.2	0.1	0.1
B_SW	D	1	0.7	1.2	0.1	0.1

ENDWALL COLUMN REACTIONS(k)

Frame Line	Col Line	Max Horz	Max +Vert	Max -Vert	Load Id
1	B	0.9	0.1	0.0	(8)
1	B	0.1	0.9	0.0	(10)
5	C	0.0	0.0	0.0	(a)

- (a) Load combinations do not produce a max for this direction
- (8) 0.6Dead+0.6Wind_Right2+0.6Wind_Suction
- (10) Dead+0.6Wind_Right2+0.6Wind_Suction

NOTES FOR REACTIONS

Building reactions are based on the following building data:

- Width (ft) = 32.0
- Length (ft) = 69.0
- Eave Height (ft) = 12.0 / 12.0
- Roof Slope (rise/12) = 4.00 / 4.00
- Roof Dead Load (psf) = 2.0
- Roof Live Load (psf) = 20.0
- Frame Live Load (psf) = 15.8 (Min) / 19.6 (Max)
- Collateral Load (psf) = 1.0
- Snow Load (psf) = 7.0
- Wind Speed (mph) = 106.0
- Wind Code = 2021 IBC
- Exposure = C
- Closure = Enclosed
- Internal Wind Coeff = -0.18, +0.18
- Risk Category = II - Normal
- Importance - Seismic = 1.00
- Seismic Design Category = A

BUILDING BRACING REACTIONS

Wall Loc	Line	Col Line	± Reactions(k)			
			Wind		Seismic	
			Horz	Vert	Horz	Vert
L_SW	1					
F_SW	A	1,2				
R_SW	5					
B_SW	D	1,2				

APPROVAL DRAWINGS

- APPROVED AS DRAWN
- APPROVED AS NOTED
- NOT APPROVED

____ INITIAL

Please Check And Approve All Dimensions And Conditions. STANDARD STRUCTURES Must Be Notified Of Any Changes.

SSI STANDARD STRUCTURES INC.
MANUFACTURER OF METAL BUILDINGS & COMPONENTS

P.O. BOX 1912
ODESSA, TX. 79760
1-800-240-0335



ACCREDITED™
Metal Building Systems
AC 472

APPROVAL & PERMIT

JOB NAME: Pettus Construction

PROJECT NAME: Belcher

JOB LOCATION: Carlsbad, NM 88220

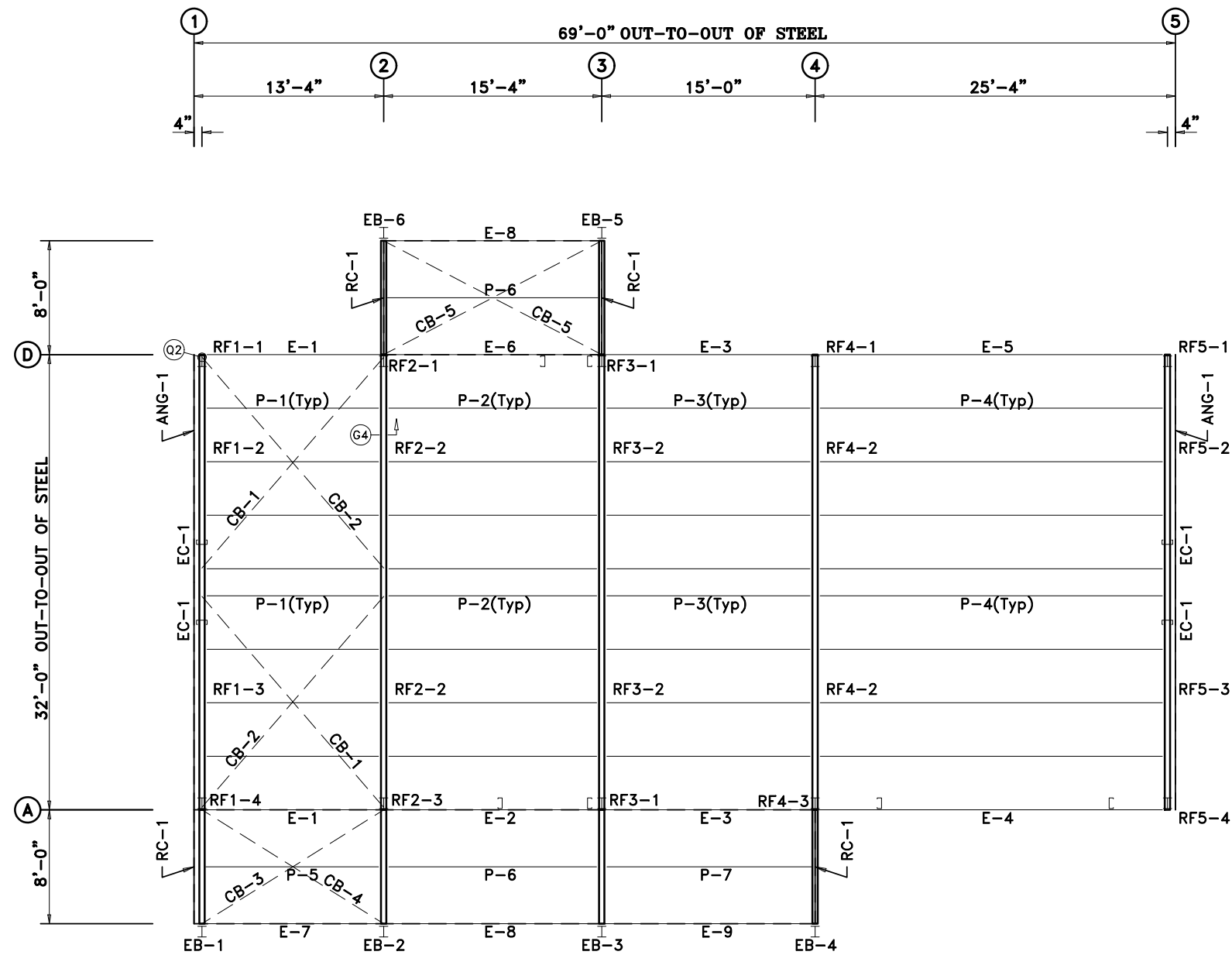
DRAWING TITLE: ANCHOR BOLT REACTIONS

DATE: 4/21/26

DET:

JOB NO.: 26056

PG.: E-2

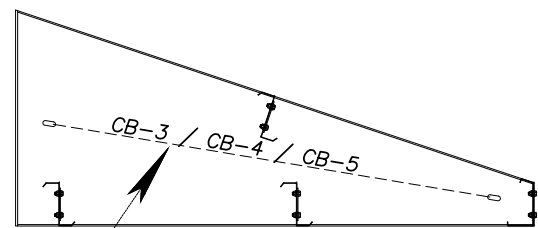


EXTENSION/CANOPY BOLTS				
ROOF PLAN				
MARK	QUAN	TYPE	DIA	LENGTH
EB-1	4	A325	5/8"	1 3/4"
EB-2	4	A325	5/8"	1 3/4"
EB-3	4	A325	5/8"	1 3/4"
EB-4	4	A325	5/8"	1 3/4"
EB-5	4	A325	5/8"	1 3/4"
EB-6	4	A325	5/8"	1 3/4"

MEMBER TABLE			
ROOF PLAN			
QUAN	MARK	PART	LENGTH
1	EB-1	BEAM	8'-5 3/16"
1	EB-2	BEAM	8'-5 3/16"
1	EB-3	BEAM	8'-5 3/16"
1	EB-4	BEAM	8'-5 3/16"
1	EB-5	BEAM	8'-5 3/16"
1	EB-6	BEAM	8'-5 3/16"
8	P-1	8x25Z16	12'-7 9/16"
8	P-2	8x25Z16	14'-11 9/16"
8	P-3	8x25Z16	14'-7 9/16"
8	P-4	8x25Z12	24'-7 9/16"
1	P-5	8x25Z16	12'-7 1/2"
2	P-6	8x25Z16	14'-11 1/2"
1	P-7	8x25Z16	14'-7 1/2"
2	E-1	84LEDS14	12'-5 1/2"
1	E-2	84LEDS14	14'-9 1/2"
2	E-3	84LEDS14	14'-5 1/2"
1	E-4	84LEDS14	24'-5 1/2"
1	E-5	84LEDS14	24'-5 1/2"
1	E-6	84LEDS14	14'-9 1/2"
1	E-7	84LEDS14	12'-9 5/8"
2	E-8	84LEDS14	14'-11 1/2"
1	E-9	84LEDS14	14'-7 1/2"
2	CB-1	1/4_CBL	18'-1"
2	CB-2	1/4_CBL	18'-2"
1	CB-3	1/4_CBL	13'-3"
1	CB-4	1/4_CBL	13'-4"
2	CB-5	1/4_CBL	15'-5"

Provide custom 14ga flat bottom eave struts for canopies

ROOF FRAMING PLAN



Run canopy cables between roof purlins and soffit purlins as shown

Extension Beam Cable Layout Detail

APPROVAL DRAWINGS

- APPROVED AS DRAWN
- APPROVED AS NOTED
- NOT APPROVED

____ INITIAL

Please Check And Approve All Dimensions And Conditions. STANDARD STRUCTURES Must Be Notified Of Any Changes.

SSI STANDARD STRUCTURES INC.
MANUFACTURER OF METAL BUILDINGS & COMPONENTS

P.O. BOX 1912
ODESSA, TX. 79760
1-800-240-0335



ACCREDITED™
Metal Building Systems
AC 472

APPROVAL & PERMIT

JOB NAME: Pettus Construction

PROJECT NAME: Belcher

JOB LOCATION: Carlsbad, NM 88220

DRAWING TITLE: ROOF FRAMING

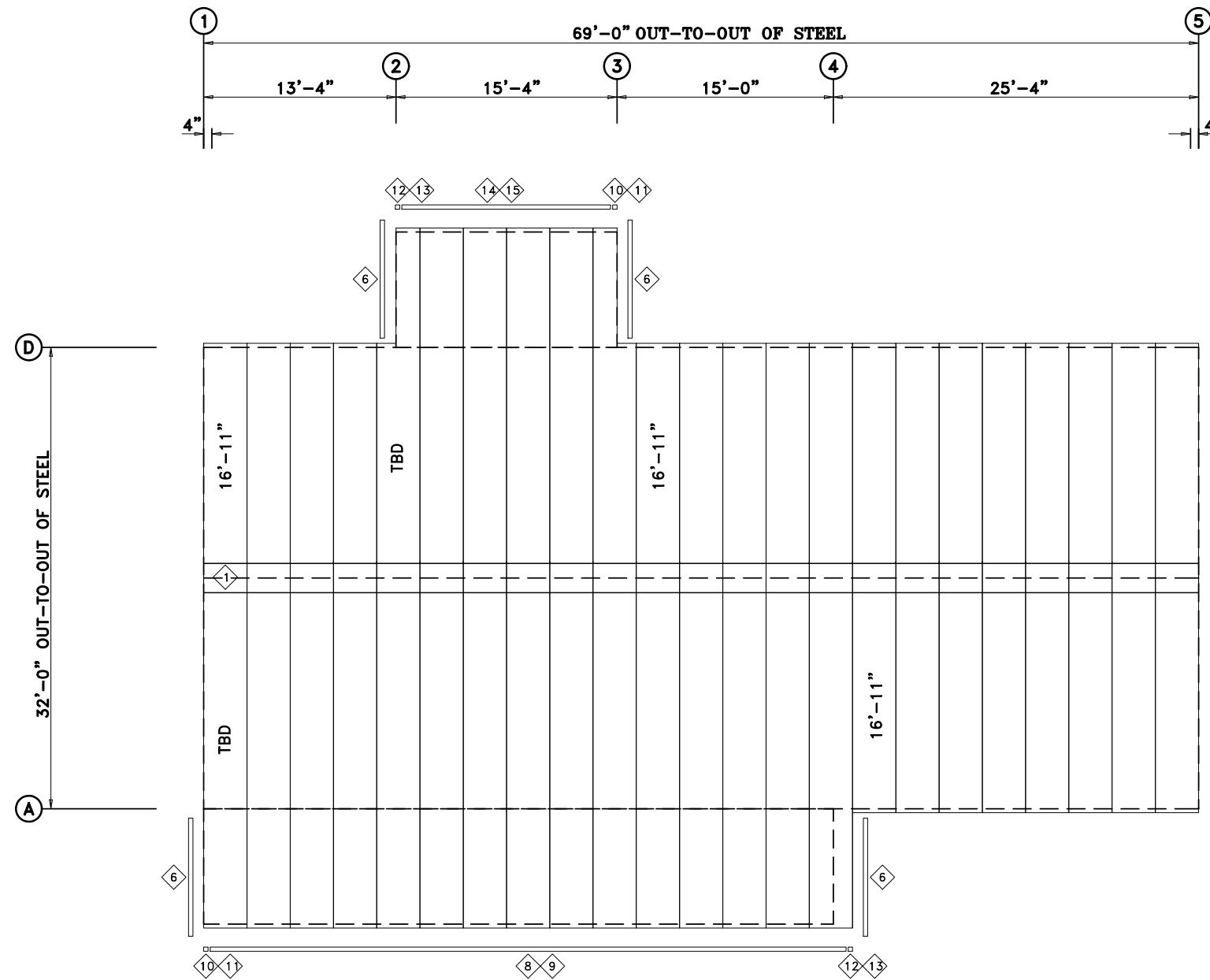
DATE: 4/21/26

DET:

JOB NO.: 26056

PG.: E-3

TRIM TABLE				
ROOF PLAN				
ID	QUAN	PART	LENGTH	DETAIL
1	23	PEAK 26R	3'-0"	TRIM #1
2	2	HEADR243	22'-0"	
3	5	ECF-80-0	9'-0"	
4	2	ECF-80-0	7'-10"	TRIM #3
5	1	HEADR243	15'-4"	
6	1	RAKER243	9'-0"	
7	5	TT2	10'-3"	
8	2	GUTT243	22'-2"	
9	5	BACKSPLS	10'-3"	
10	1	SGUTENDL	6"	
11	1	SCRNBX-L	6"	
12	1	SGUTENDR	6"	
13	1	SCRNBX-R	6"	
14	1	GUTT243	16'-1"	
15	2	BACKSPLS	10'-3"	
16	2	TT2	10'-3"	



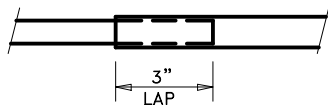
ROOF SHEETING PLAN
PANELS: 26 Ga. PBR - Need Color Roof

APPROVAL DRAWINGS

- APPROVED AS DRAWN
- APPROVED AS NOTED
- NOT APPROVED

____ INITIAL

Please Check And Approve All Dimensions
 And Conditions. **STANDARD STRUCTURES**
 Must Be Notified Of Any Changes.



ALL TRIM LAPS ARE TO BE 3" LONG

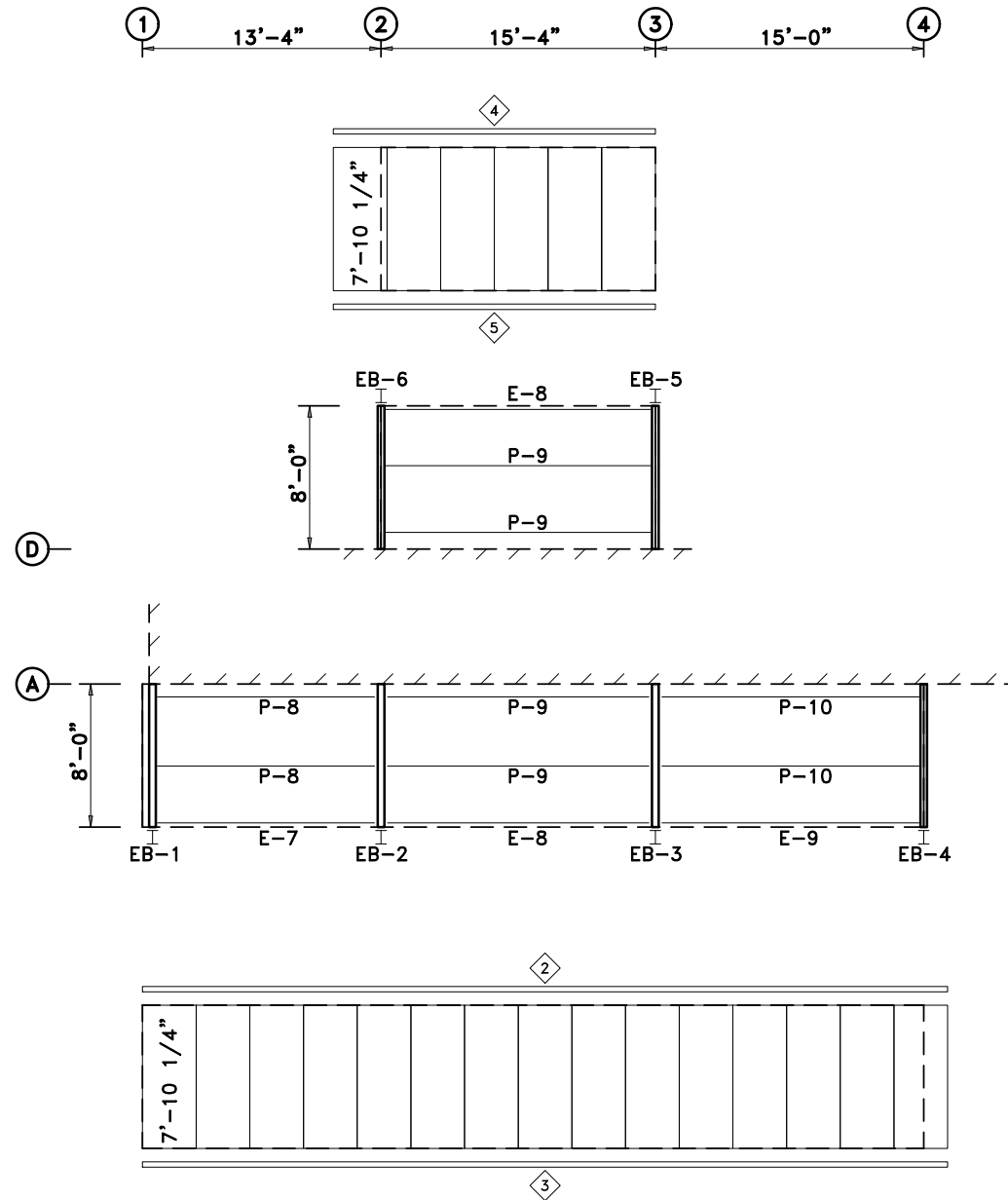
NOTE: If Trim Lap Is More Than 3" Long, The Trim May Not Cover The Required Coverage Length.

SSI STANDARD STRUCTURES INC.
 MANUFACTURER OF METAL BUILDINGS & COMPONENTS
 P.O. BOX 1912
 ODESSA, TX. 79760
 1-800-240-0335

IAS
 ACCREDITED™
 Metal Building Systems
 AC 472

APPROVAL & PERMIT

JOB NAME: Pettus Construction
 PROJECT NAME: Belcher
 JOB LOCATION: Carlsbad, NM 88220
 DRAWING TITLE: *ROOF SHEETING*
 DATE: 4/21/26 DET: JOB NO.: 26056 PG.: E-4



SOFFIT PURLIN FRAMING PLAN

SOFFIT PANELS: 26 Ga. RPBM - Need Color Soffit

APPROVAL DRAWINGS

- APPROVED AS DRAWN
- APPROVED AS NOTED
- NOT APPROVED

____ INITIAL

Please Check And Approve All Dimensions
And Conditions. STANDARD STRUCTURES
Must Be Notified Of Any Changes.

MEMBER TABLE			
ROOF PLAN			
QUAN	MARK	PART	LENGTH
1	EB-1	BEAM	8'-5 3/16"
1	EB-2	BEAM	8'-5 3/16"
1	EB-3	BEAM	8'-5 3/16"
1	EB-4	BEAM	8'-5 3/16"
1	EB-5	BEAM	8'-5 3/16"
1	EB-6	BEAM	8'-5 3/16"
2	P-8	8x25Z16	12'-7 1/2"
4	P-9	8x25Z16	14'-11 1/2"
2	P-10	8x25Z16	14'-7 1/2"
1	E-7	CUSTOM	12'-9 5/8"
2	E-8	CUSTOM	14'-11 1/2"
1	E-9	CUSTOM	14'-7 1/2"

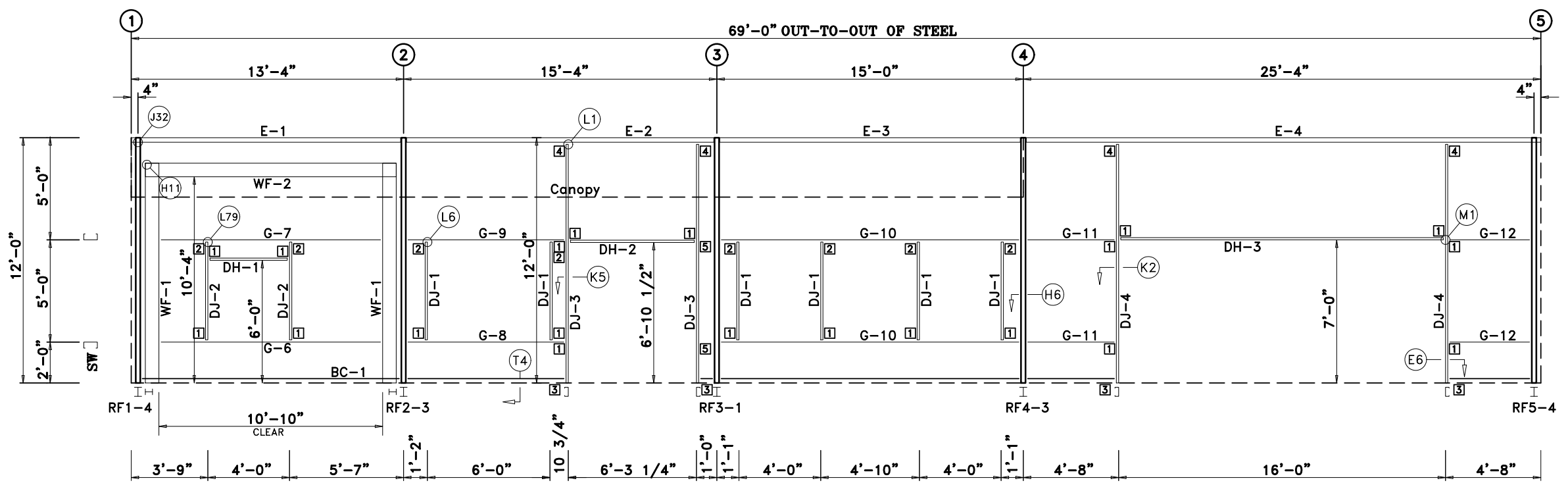
TRIM TABLE			
ROOF PLAN			
◇ID	QUAN	PART	LENGTH
2	2	HEADR243	22'-0"
3	5	ECF-80-0	9'-0"
4	2	ECF-80-0	7'-10"
5	1	HEADR243	15'-4"

SSI STANDARD STRUCTURES INC.
MANUFACTURER OF METAL BUILDINGS & COMPONENTS
P.O. BOX 1912
ODESSA, TX. 79760
1-800-240-0335

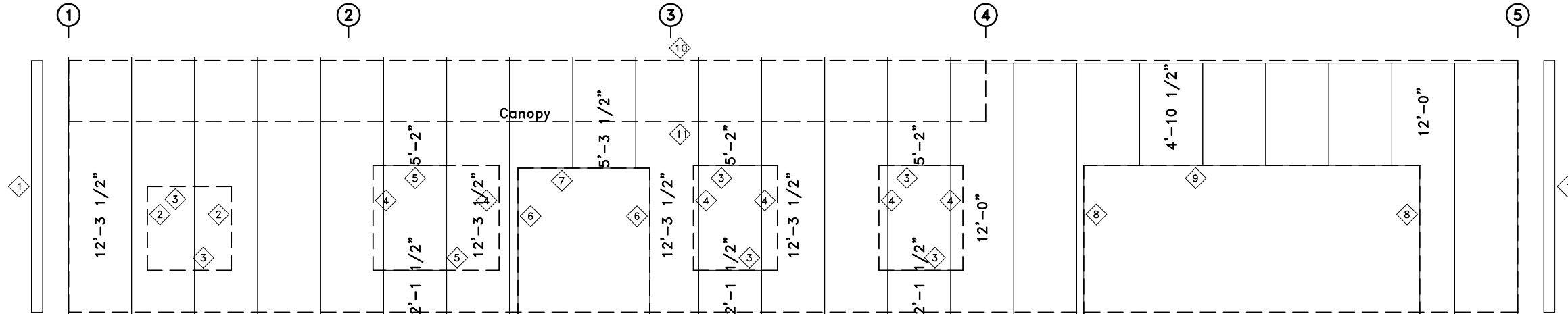
IAS
ACCREDITED™
Metal Building Systems
AC 472

APPROVAL & PERMIT

JOB NAME: Pettus Construction
PROJECT NAME: Belcher
JOB LOCATION: Carlsbad, NM 88220
DRAWING TITLE: SOFFIT FRAMING & SHEETING PLAN
DATE: 4/21/26 DET: JOB NO.: 26056 PG.: E-5



SIDEWALL FRAMING: FRAME LINE A



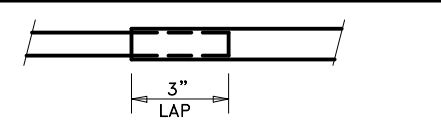
SIDEWALL SHEETING & TRIM: FRAME LINE A
PANELS: 26 Ga. PBR - Need Color Walls

TRIM TABLE				
FRAME LINE A				
ID	QUAN	PART	LENGTH	DETAIL
1	2	CRNTR243	12'-1"	TRIM #2
2	2	JMBTR243	4'-4"	TRIM #6
3	6	HEADR243	4'-4"	TRIM #8
4	6	JMBTR243	5'-4"	TRIM #6
5	2	HEADR243	6'-4"	TRIM #8
6	2	JMBTR243	7'-1"	TRIM #6
7	1	HEADR243	6'-8"	TRIM #8
8	2	JMBTR243	7'-2"	TRIM #6
9	1	HEADR243	16'-4"	TRIM #8
10	5	TT2	10'-3"	TRIM #8
11	2	HEADR243	22'-0"	TRIM #8

BOLT TABLE				
FRAME LINE A				
LOCATION	QUAN	TYPE	DIA	LENGTH
WF-1 - WF-2	8	A325	5/8"	1 3/4"
WF-1 - RF1-4	4	A325	3/4"	1 1/2"
WF-1 - RF2-3	4	A325	3/4"	1 1/2"

MEMBER TABLE				
FRAME LINE A				
QUAN	MARK	PART	LENGTH	
2	WF-1	W8X13	11'-0"	
1	WF-2	W8X13	10'-9 3/4"	
6	DJ-1	8x35C16	4'-11 1/2"	
2	DJ-2	8x35C16	4'-11 1/2"	
2	DJ-3	8x35C16	11'-3 5/16"	
2	DJ-4	8x35C16	11'-3 5/16"	
1	DH-1	8x35C16	4'-0"	
1	DH-2	8x35C16	6'-3 1/4"	
1	DH-3	8x35C16	16'-0"	
1	E-1	84LEDS14	12'-5 1/2"	
1	E-2	84LEDS14	14'-9 1/2"	
1	E-3	84LEDS14	14'-5 1/2"	
1	E-4	84LEDS14	24'-5 1/2"	
1	G-6	8x25C16	10'-9"	
1	G-7	8x25C16	10'-9"	
1	G-8	8x25C16	7'-5 3/4"	
1	G-9	8x25C16	7'-5 3/4"	
2	G-10	8x25C16	14'-5 1/2"	
2	G-11	8x25Z16	4'-1"	
2	G-12	8x25Z16	3'-10"	

CONNECTION PLATES			
FRAME LINE A			
ID	QUAN	MARK/PART	
1	20	C-5	
2	8	j1	
3	4	C-104	
4	4	C11-8x4	
5	2	b3	



ALL TRIM LAPS ARE TO BE 3" LONG

NOTE: If Trim Lap Is More Than 3" Long, The Trim May Not Cover The Required Coverage Length.

APPROVAL DRAWINGS

- APPROVED AS DRAWN
- APPROVED AS NOTED
- NOT APPROVED

____ INITIAL

Please Check And Approve All Dimensions And Conditions. STANDARD STRUCTURES Must Be Notified Of Any Changes.

SSI STANDARD STRUCTURES INC.
MANUFACTURER OF METAL BUILDINGS & COMPONENTS

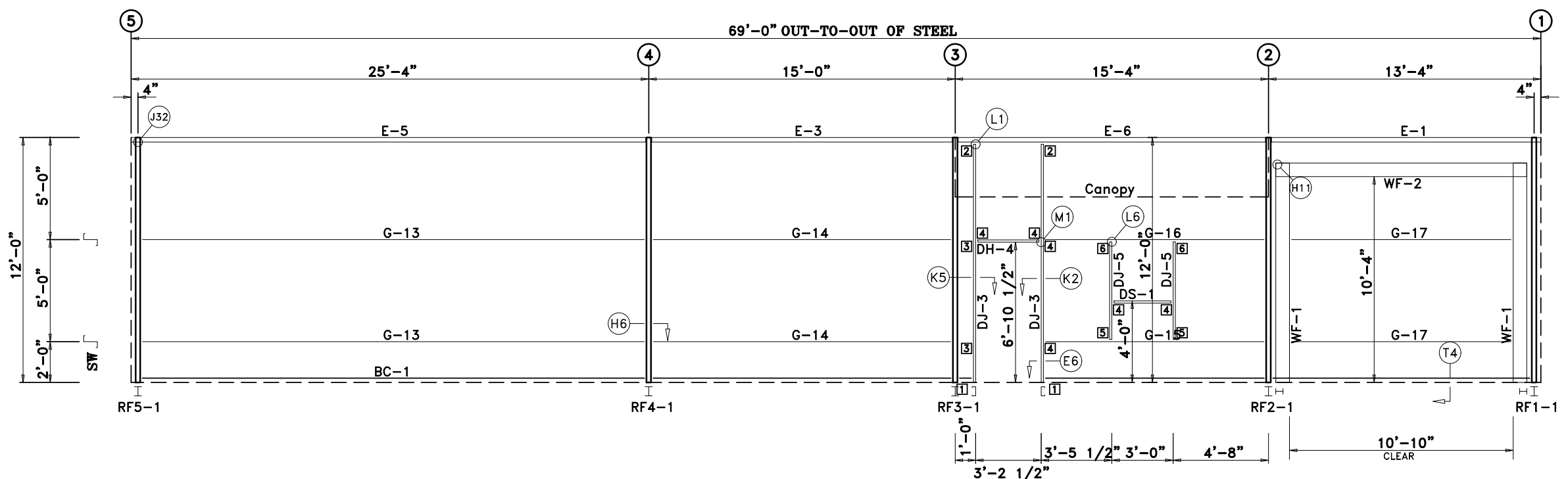
P.O. BOX 1912
ODESSA, TX. 79760
1-800-240-0335

APPROVAL & PERMIT

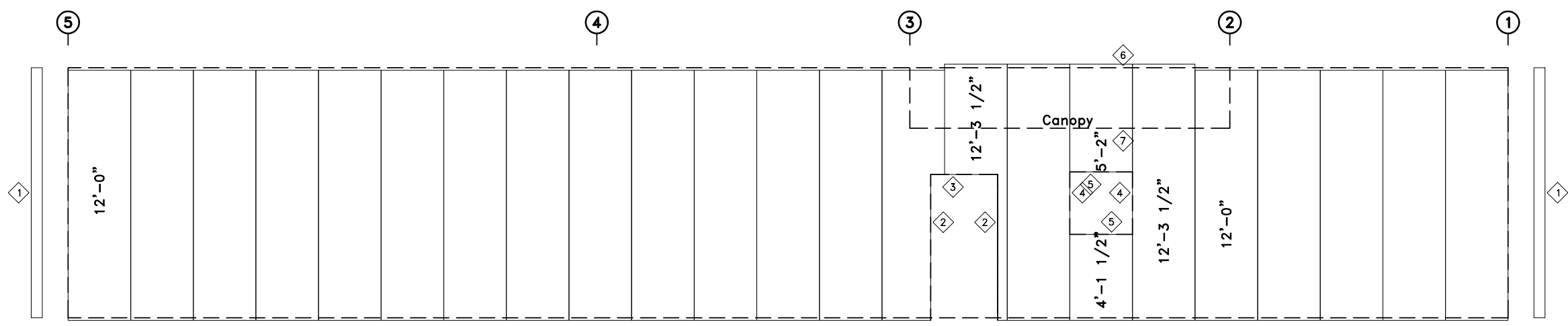
JOB NAME: Pettus Construction
PROJECT NAME: Belcher
JOB LOCATION: Carlsbad, NM 88220
DRAWING TITLE: *SIDEWALL DRAWING*
DATE: 4/21/26 DET: JOB NO.: 26056 PG.: E-6



ACCREDITED™
Metal Building Systems
AC 472



SIDEWALL FRAMING: FRAME LINE D



SIDEWALL SHEETING & TRIM: FRAME LINE D

PANELS: 26 Ga. PBR - Need Color Walls

TRIM TABLE				
FRAME LINE D				
ID	QUAN	PART	LENGTH	DETAIL
1	2	CRNTR243	12'-1"	TRIM #2
2	2	JMBTR243	7'-1"	TRIM #6
3	1	HEADR243	3'-7"	TRIM #8
4	2	JMBTR243	3'-4"	TRIM #6
5	2	HEADR243	3'-4"	TRIM #8
6	2	TT2	10'-3"	
7	1	HEADR243	15'-4"	

BOLT TABLE				
FRAME LINE D				
LOCATION	QUAN	TYPE	DIA	LENGTH
WF-1 - WF-2	8	A325	5/8"	1 3/4"
WF-1 - RF2-1	4	A325	3/4"	1 1/2"
WF-1 - RF1-1	4	A325	3/4"	1 1/2"

MEMBER TABLE				
FRAME LINE D				
QUAN	MARK	PART	LENGTH	
2	WF-1	W8X13	11'-0"	
1	WF-2	W8X13	10'-9 3/4"	
2	DJ-3	8x35C16	11'-3 5/16"	
2	DJ-5	8x35C16	4'-8"	
1	DH-4	8x35C16	3'-2 1/2"	
1	DS-1	8x35C16	3'-0"	
1	E-1	84LEDS14	12'-5 1/2"	
1	E-3	84LEDS14	14'-5 1/2"	
1	E-5	84LEDS14	24'-5 1/2"	
1	E-6	84LEDS14	14'-9 1/2"	
2	G-13	8x25Z14	24'-6 1/2"	
2	G-14	8x25Z16	14'-5 1/2"	
1	G-15	8x25Z16	10'-6 1/2"	
1	G-16	8x25C16	10'-6 1/2"	
2	G-17	8x25Z16	10'-9"	

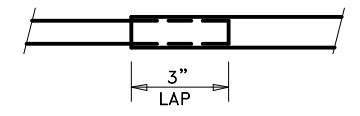
CONNECTION PLATES			
FRAME LINE D			
ID	QUAN	MARK/PART	
1	2	C-104	
2	2	C11-8x4	
3	2	b3	
4	6	C-5	
5	2	f4	
6	2	j1	

APPROVAL DRAWINGS

- APPROVED AS DRAWN
- APPROVED AS NOTED
- NOT APPROVED

____ INITIAL

Please Check And Approve All Dimensions And Conditions. STANDARD STRUCTURES Must Be Notified Of Any Changes.



ALL TRIM LAPS ARE TO BE 3" LONG

NOTE: If Trim Lap Is More Than 3" Long, The Trim May Not Cover The Required Coverage Length.

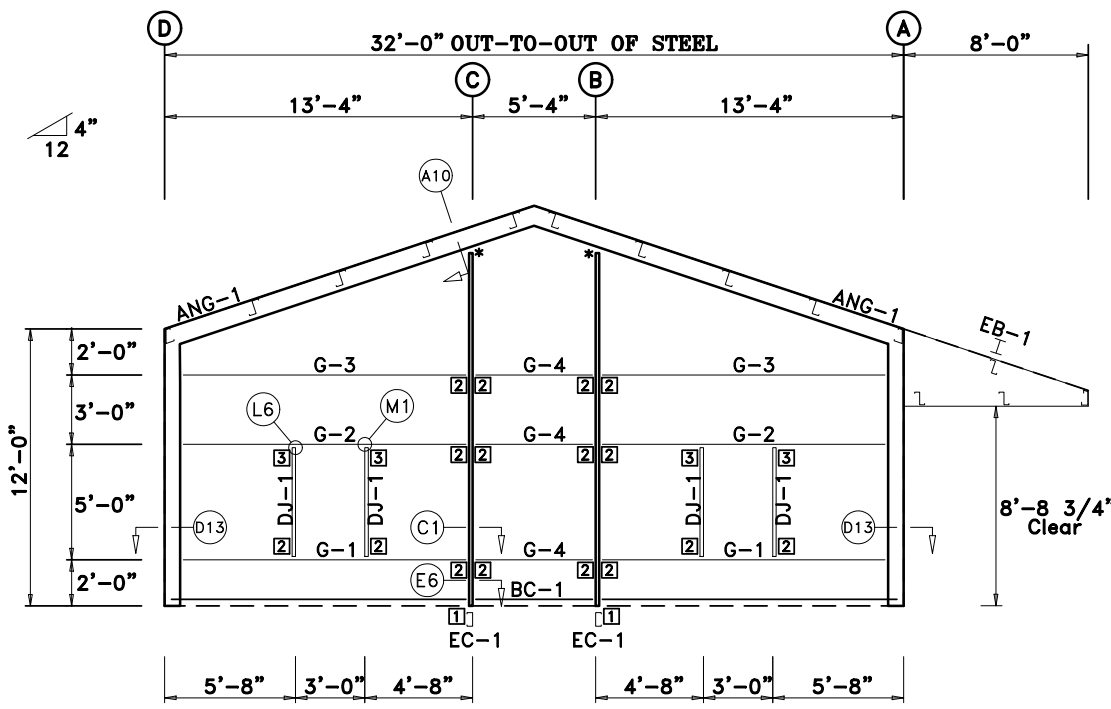
SSI STANDARD STRUCTURES INC.
 MANUFACTURER OF METAL BUILDINGS & COMPONENTS
 P.O. BOX 1912
 ODESSA, TX. 79760
 1-800-240-0335



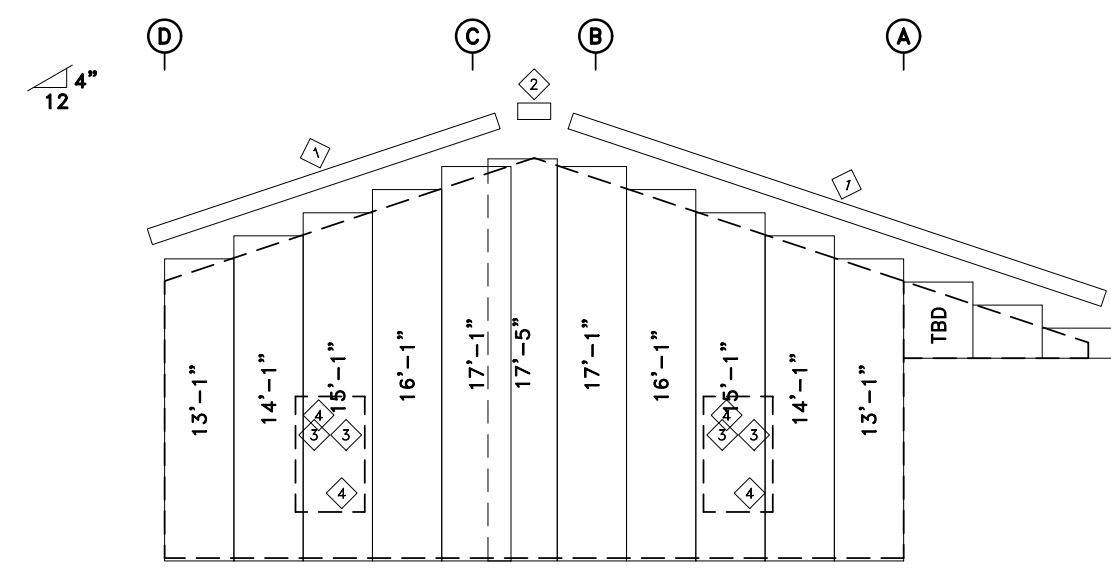
ACCREDITED™
 Metal Building Systems
 AC 472

APPROVAL & PERMIT

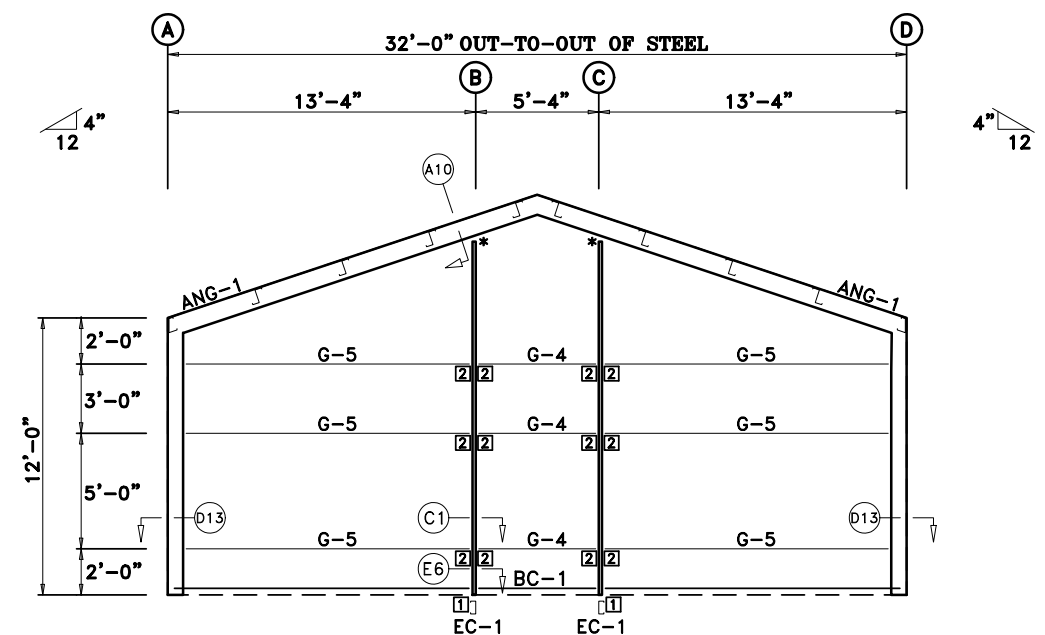
JOB NAME: Pettus Construction
 PROJECT NAME: Belcher
 JOB LOCATION: Carlsbad, NM 88220
 DRAWING TITLE: *SIDEWALL DRAWING*
 DATE: 4/21/26 DET: JOB NO.: 26056 PG.: E-7



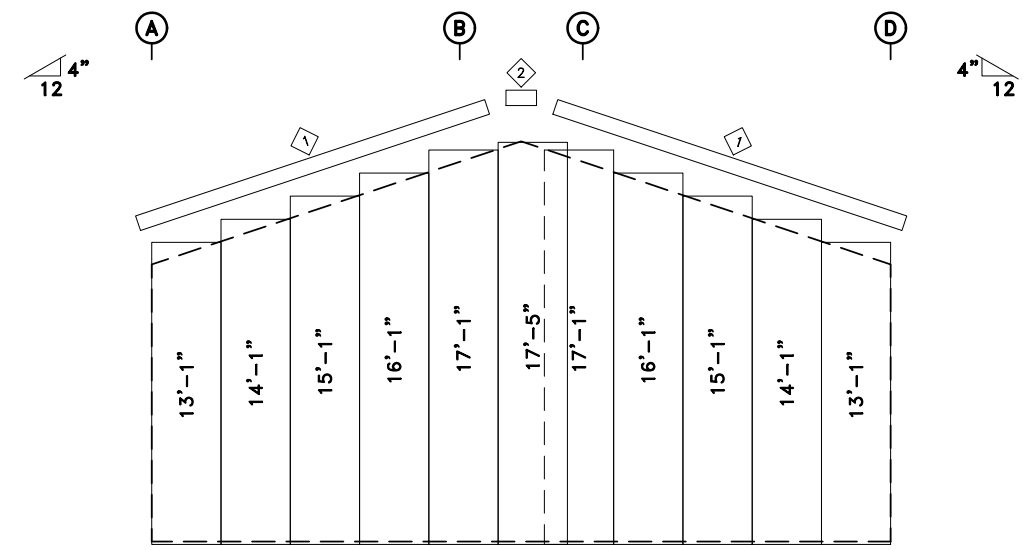
ENDWALL FRAMING: FRAME LINE 1



ENDWALL SHEETING & TRIM: FRAME LINE 1
PANELS: 26 Ga. PBR - Need Color Walls



ENDWALL FRAMING: FRAME LINE 5



ENDWALL SHEETING & TRIM: FRAME LINE 5
PANELS: 26 Ga. PBR - Need Color Walls

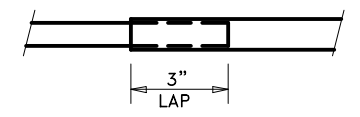
TRIM TABLE FRAME LINE 5				
ID	QUAN	PART	LENGTH	DETAIL
1	2	RAKER243	17'-5"	TRIM #3
2	1	PEAKBX-R	1'-2"	TRIM #15

BOLT TABLE FRAME LINE 5				
LOCATION	QUAN	TYPE	DIA	LENGTH
Columns/Raf	4	A325	1/2"	1 1/4"

MEMBER TABLE FRAME LINE 5				
QUAN	MARK	PART	LENGTH	
2	EC-1	8x35C16	15'-5 5/8"	
3	G-4	8x25Z16	5'-3 1/2"	
6	G-5	8x25Z16	12'-3 3/4"	

CONNECTION PLATES FRAME LINE 5			
ID	QUAN	MARK/PART	
1	2	C-104	
2	12	C-5	

* Use 2" slotted connection with bolt centered in slot. Provide washer and double nut.



ALL TRIM LAPS ARE TO BE 3" LONG

NOTE: If Trim Lap Is More Than 3" Long, The Trim May Not Cover The Required Coverage Length.

MEMBER TABLE FRAME LINE 1				
QUAN	MARK	PART	LENGTH	
1	EB-1	BEAM	8'-5 3/16"	
2	EC-1	8x35C16	15'-5 5/8"	
4	DJ-1	8x35C16	4'-11 1/2"	
2	G-1	8x25C16	12'-3 3/4"	
2	G-2	8x25C16	12'-3 3/4"	
2	G-3	8x25Z16	12'-3 3/4"	
3	G-4	8x25Z16	5'-3 1/2"	

BOLT TABLE FRAME LINE 1				
LOCATION	QUAN	TYPE	DIA	LENGTH
Columns/Raf	4	A325	1/2"	1 1/4"

TRIM TABLE FRAME LINE 1				
ID	QUAN	PART	LENGTH	DETAIL
1	2	RAKER243	17'-5"	TRIM #3
2	1	PEAKBX-R	1'-2"	TRIM #15
3	4	JMBTR243	5'-4"	TRIM #6
4	4	HEADR243	3'-4"	TRIM #8

CONNECTION PLATES FRAME LINE 1			
ID	QUAN	MARK/PART	
1	2	C-104	
2	16	C-5	
3	4	11	

APPROVAL DRAWINGS

- APPROVED AS DRAWN
- APPROVED AS NOTED
- NOT APPROVED

____ INITIAL

Please Check And Approve All Dimensions And Conditions. STANDARD STRUCTURES Must Be Notified Of Any Changes.

SSI STANDARD STRUCTURES INC.
MANUFACTURER OF METAL BUILDINGS & COMPONENTS

P.O. BOX 1912
ODESSA, TX. 79760
1-800-240-0335



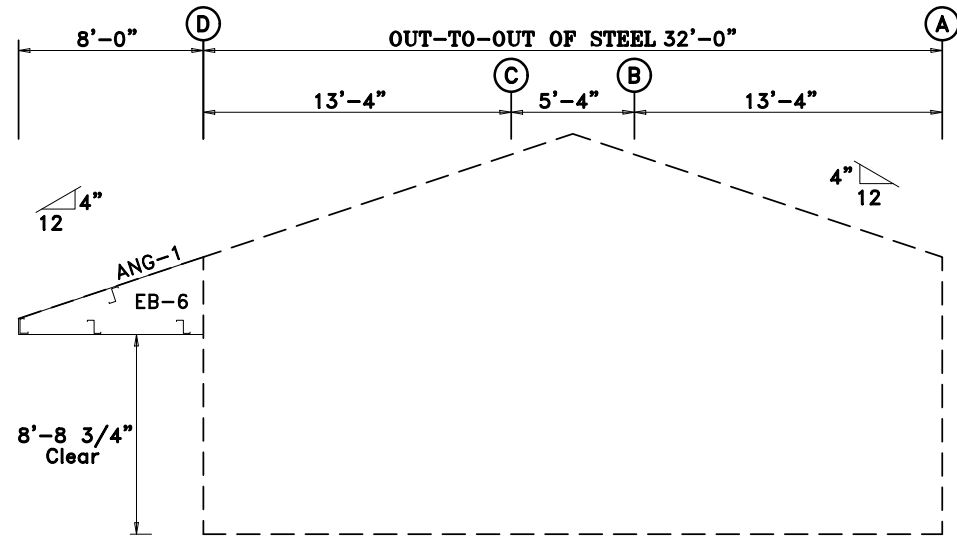
ACCREDITED™
Metal Building Systems
AC 472

APPROVAL & PERMIT

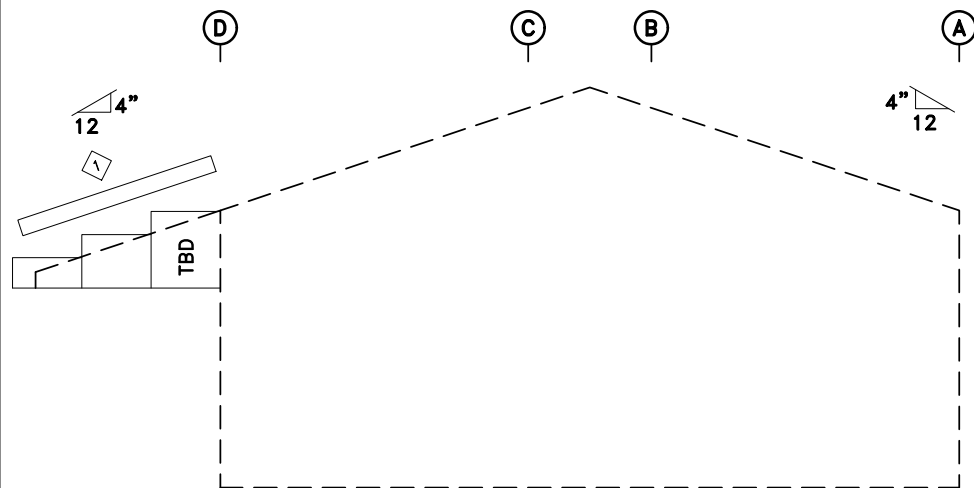
JOB NAME:	Pettus Construction
PROJECT NAME:	Belcher
JOB LOCATION:	Carlsbad, NM 88220
DRAWING TITLE:	ENDWALL DRAWING
DATE:	4/21/26
DET:	
JOB NO.:	26056
PG.:	E-8

TRIM TABLE				
FRAME LINE 1				
◇ID	QUAN	PART	LENGTH	DETAIL
1	2	RAKER243	TBD	TRIM #3

MEMBER TABLE			
FRAME LINE 1			
QUAN	MARK	PART	LENGTH
1	EB-6	BEAM	8'-5 3/16"



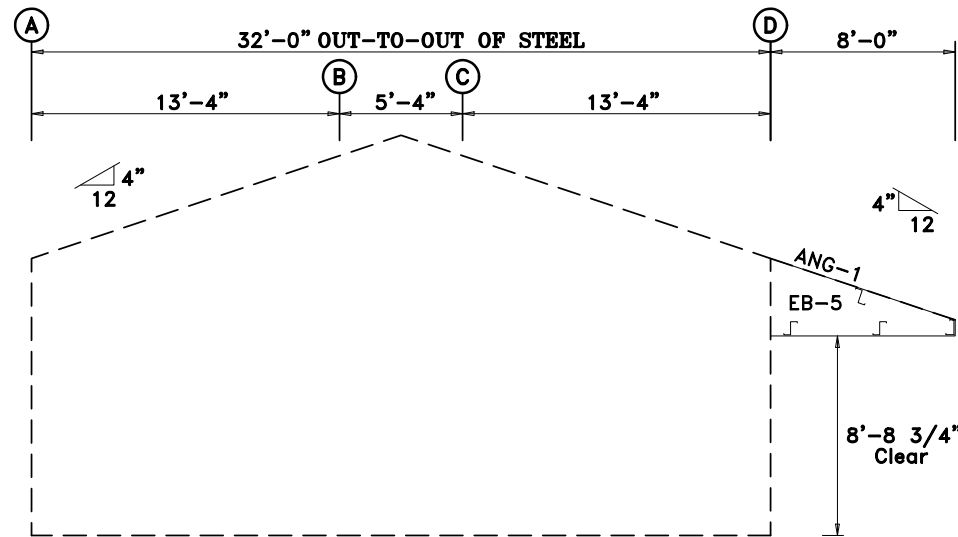
ENDWALL FRAMING: FRAME LINE 2



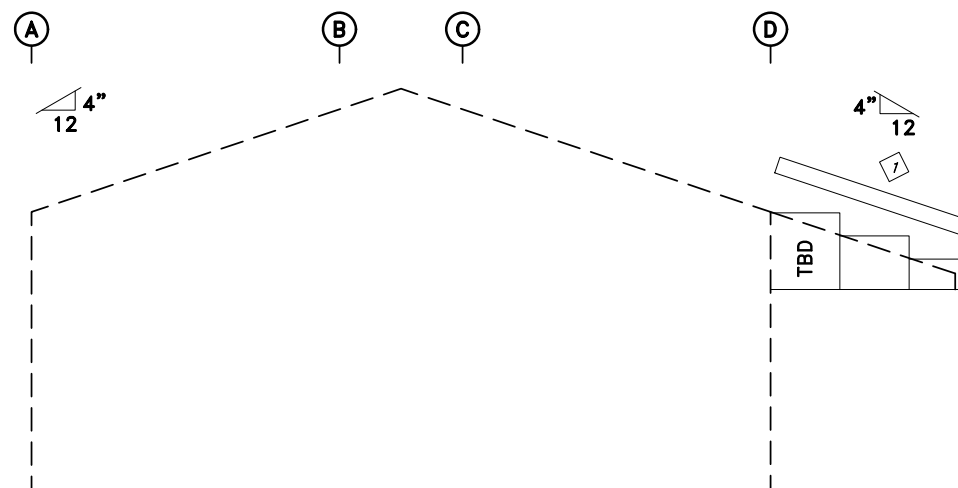
ENDWALL SHEETING & TRIM: FRAME LINE 2
PANELS: 26 Ga. PBR - Need Color Walls

TRIM TABLE				
FRAME LINE 1				
◇ID	QUAN	PART	LENGTH	DETAIL
1	2	RAKER243	TBD	TRIM #3

MEMBER TABLE			
FRAME LINE 1			
QUAN	MARK	PART	LENGTH
1	EB-5	BEAM	8'-5 3/16"



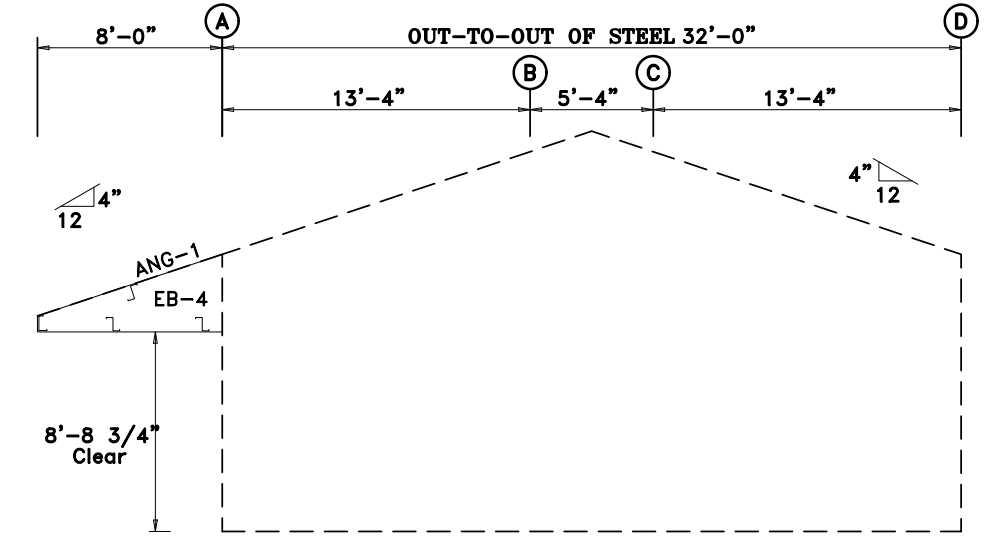
ENDWALL FRAMING: FRAME LINE 3



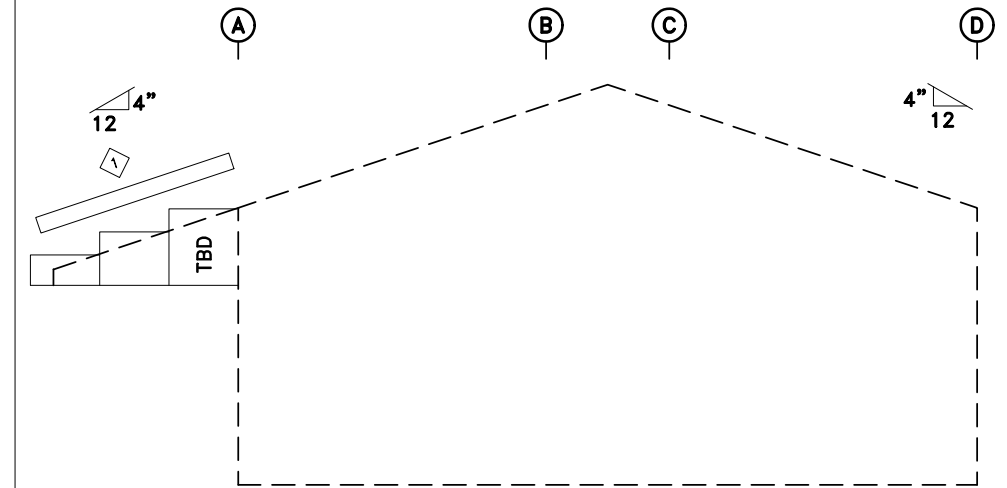
ENDWALL SHEETING & TRIM: FRAME LINE 3
PANELS: 26 Ga. PBR - Need Color Walls

TRIM TABLE				
FRAME LINE 1				
◇ID	QUAN	PART	LENGTH	DETAIL
1	2	RAKER243	TBD	TRIM #3

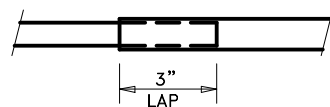
MEMBER TABLE			
FRAME LINE 1			
QUAN	MARK	PART	LENGTH
1	EB-4	BEAM	8'-5 3/16"



ENDWALL FRAMING: FRAME LINE 4



ENDWALL SHEETING & TRIM: FRAME LINE 4
PANELS: 26 Ga. PBR - Need Color Walls



ALL TRIM LAPS ARE TO BE 3" LONG

NOTE: If Trim Lap Is More Than 3" Long, The Trim May Not Cover The Required Coverage Length.

APPROVAL DRAWINGS

- APPROVED AS DRAWN
- APPROVED AS NOTED
- NOT APPROVED

____ INITIAL

Please Check And Approve All Dimensions And Conditions. STANDARD STRUCTURES Must Be Notified Of Any Changes.

SSI STANDARD STRUCTURES INC.
MANUFACTURER OF METAL BUILDINGS & COMPONENTS

P.O. BOX 1912
ODESSA, TX. 79760
1-800-240-0335

IAS

ACCREDITED™
Metal Building Systems
AC 472

APPROVAL & PERMIT

JOB NAME: Pettus Construction

PROJECT NAME: Belcher

JOB LOCATION: Carlsbad, NM 88220

DRAWING TITLE: ENDWALL DRAWING

DATE: 4/21/26

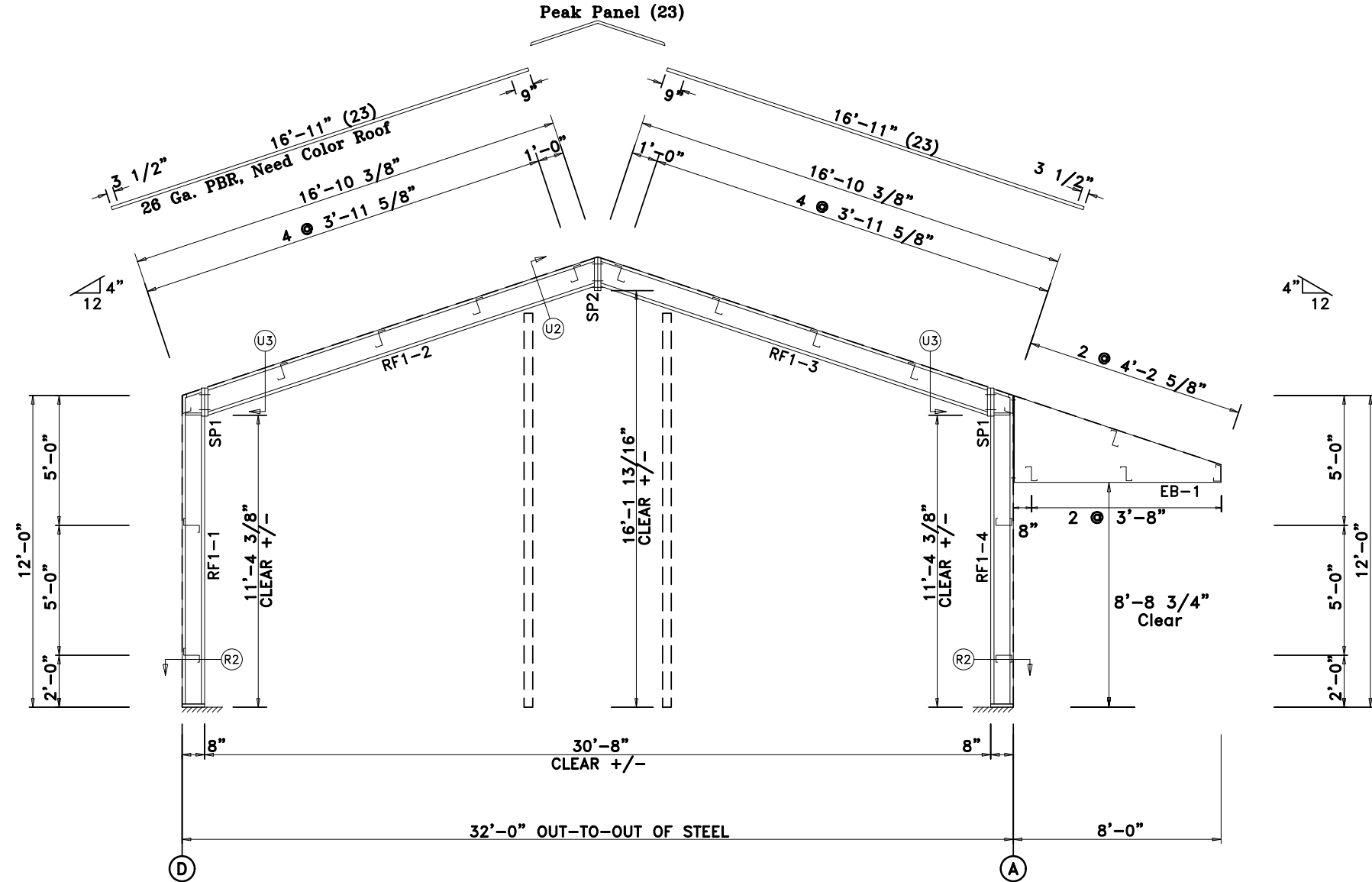
DET:

JOB NO.: 26056

PG.: E-9

SPLICE PLATE & BOLT TABLE									
Mark	Qty		Int	Type	Dia	Length	Width	Thick	Length
	Top	Bot							
SP1	2	2	0	A325	5/8"	1 3/4"	6"	3/8"	10 1/2"
SP2	2	4	0	A325	5/8"	1 3/4"	6"	3/8"	1'-2"

MEMBER TABLE						
Mark	Web Depth		Web Plate		Outside Flange	Inside Flange
	Start/End	Thick	Length	Thick	W x Thk x Length	W x Thk x Length
RF1-1	7.4/ 7.4	0.135	145.9		6 x 5/16" x 143.4 6 x 1/4" x 8.1	6 x 1/4" x 135.9
RF1-2	W10X12					
RF1-3	W10X12					
RF1-4	7.4/ 7.4	0.135	145.9		6 x 1/4" x 8.1 6 x 5/16" x 143.4	6 x 1/4" x 135.9
EB-1	7.5/39.5	0.188	101.2		6 x 1/4" x 101.2	



RIGID FRAME SECTION: FRAME LINE 1

APPROVAL DRAWINGS

- APPROVED AS DRAWN
 - APPROVED AS NOTED
 - NOT APPROVED
- ____ INITIAL

Please Check And Approve All Dimensions And Conditions. STANDARD STRUCTURES Must Be Notified Of Any Changes.

SSI STANDARD STRUCTURES INC.
 MANUFACTURER OF METAL BUILDINGS & COMPONENTS
 P.O. BOX 1912
 ODESSA, TX. 79760
 1-800-240-0335

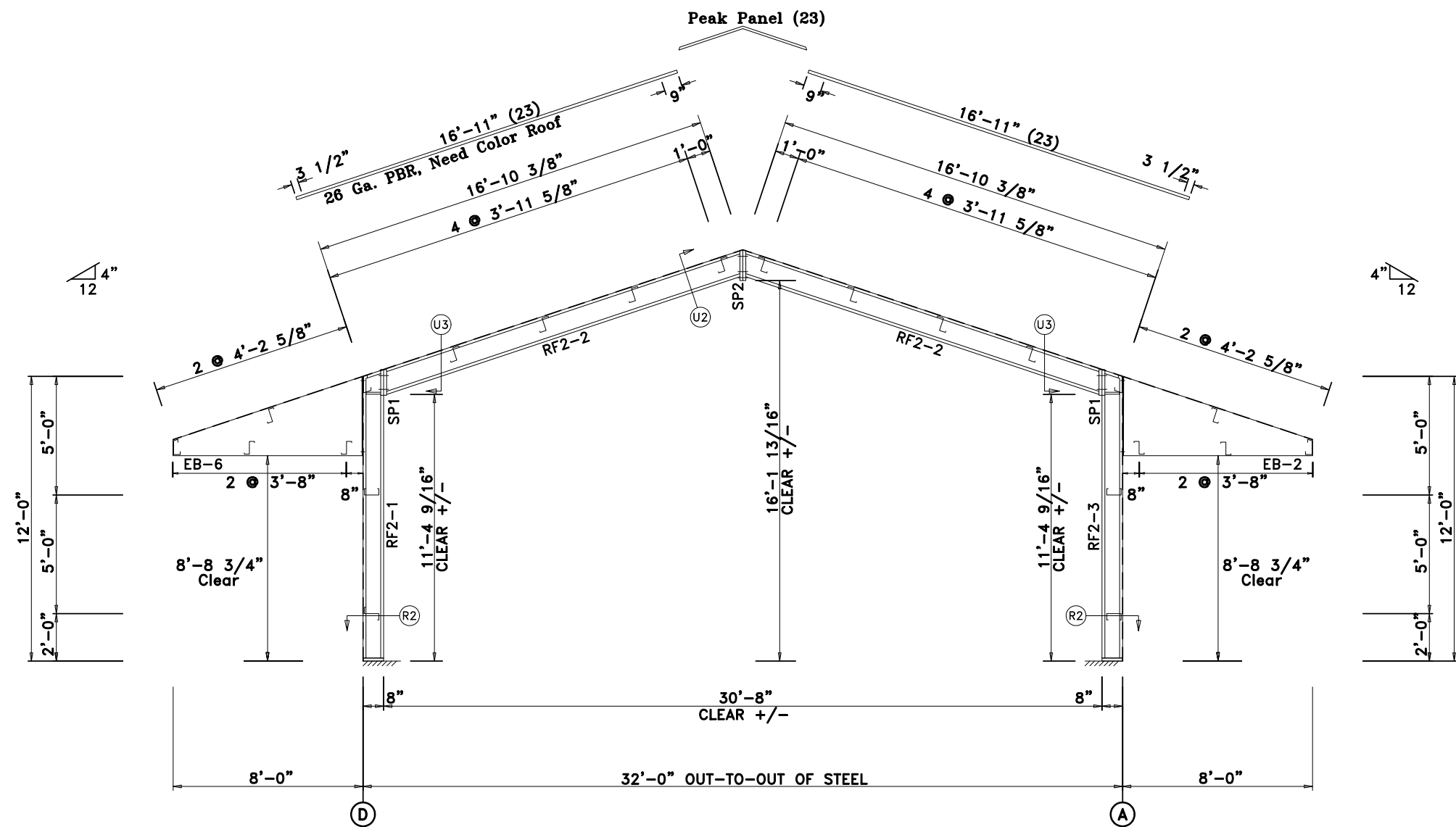
IAS
 ACCREDITED™
 Metal Building Systems
 AC 472

APPROVAL & PERMIT

JOB NAME: Pettus Construction
 PROJECT NAME: Belcher
 JOB LOCATION: Carlsbad, NM 88220
 DRAWING TITLE: RIGID FRAME SECTION
 DATE: 4/21/26 DET: JOB NO.: 26056 PG.: E-10

SPLICE PLATE & BOLT TABLE									
Mark	Qty		Int	Type	Dia	Length	Width	Thick	Length
	Top	Bot							
SP1	2	2	0	A325	3/4"	2 1/4"	6"	5/8"	10 1/2"
SP2	2	4	0	A325	5/8"	1 3/4"	6"	3/8"	1'-2"

MEMBER TABLE								
Mark	Web Depth		Web Plate		Outside Flange		Inside Flange	
	Start	End	Thick	Length	W x Thk	x Length	W x Thk	x Length
RF2-1	7.4	7.4	0.135	121.9	6 x 5/16" x 143.4		6 x 1/4" x 136.1	
	7.4	7.4	0.188	24.0	6 x 1/4" x 8.1			
RF2-2	W10X12		0.188	24.0	6 x 1/4" x 8.1		6 x 1/4" x 136.1	
RF2-3	7.4	7.4	0.135	121.9	6 x 5/16" x 143.4		6 x 1/4" x 101.2	
	7.4	7.4	0.188	101.2	6 x 1/4" x 101.2		6 x 1/4" x 101.2	
EB-2	7.5	39.5	0.188	101.2	6 x 1/4" x 101.2		6 x 1/4" x 101.2	
EB-6	7.5	39.5	0.188	101.2	6 x 1/4" x 101.2		6 x 1/4" x 101.2	



RIGID FRAME SECTION: FRAME LINE 2

APPROVAL DRAWINGS

- APPROVED AS DRAWN
 - APPROVED AS NOTED
 - NOT APPROVED
- ____ INITIAL

Please Check And Approve All Dimensions And Conditions. STANDARD STRUCTURES Must Be Notified Of Any Changes.

SSI STANDARD STRUCTURES INC.
 MANUFACTURER OF METAL BUILDINGS & COMPONENTS
 P.O. BOX 1912
 ODESSA, TX. 79760
 1-800-240-0335

IAS
 ACCREDITED™
 Metal Building Systems
 AC 472

APPROVAL & PERMIT

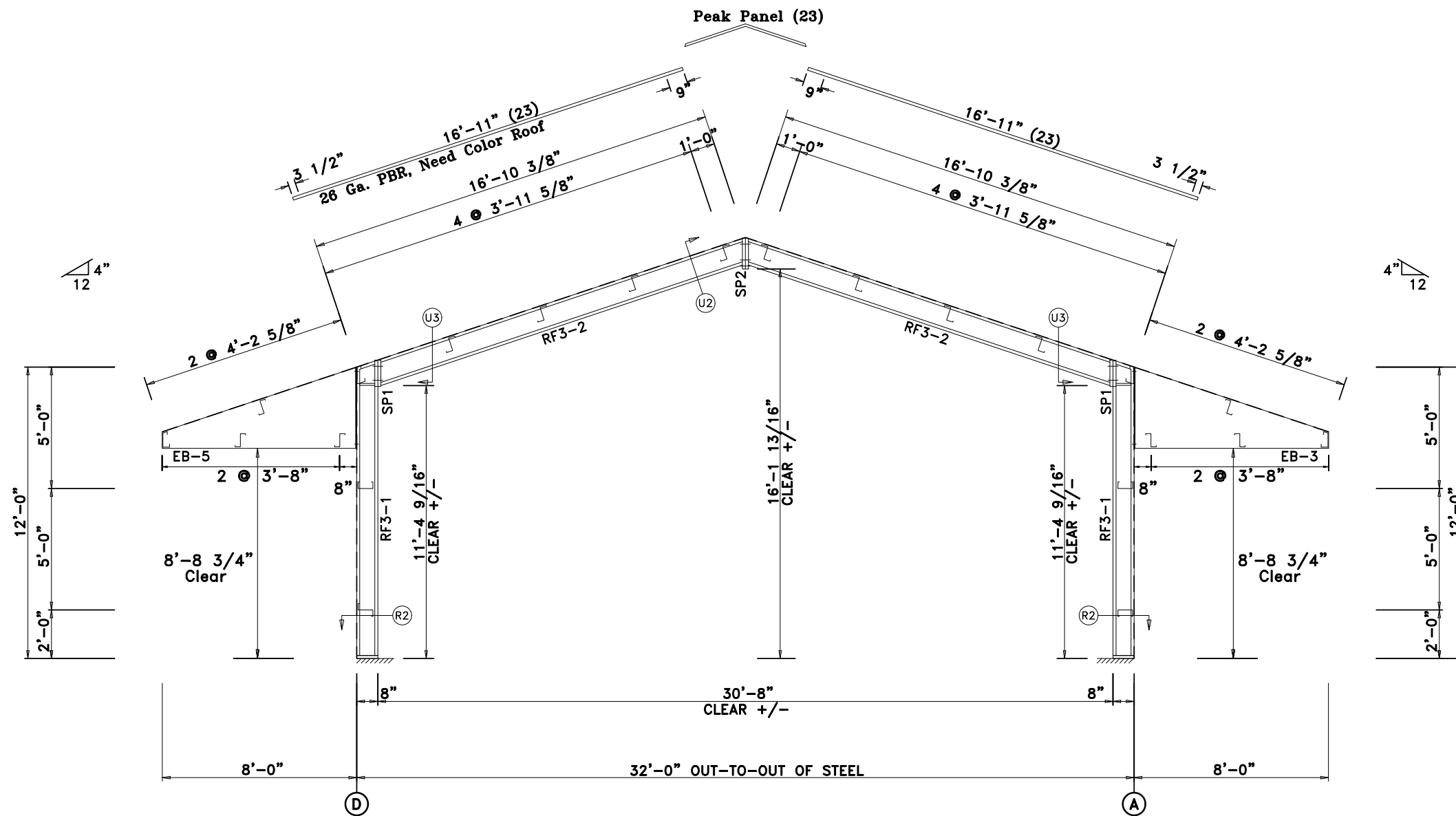
JOB NAME: Pettus Construction
 PROJECT NAME: Belcher
 JOB LOCATION: Carlsbad, NM 88220
 DRAWING TITLE: RIGID FRAME SECTION
 DATE: 4/21/26 DET: JOB NO.: 26056 PG.: E-11

SPLICE PLATE & BOLT TABLE

Mark	Qty		Int	Type	Dia	Length	Width	Thick	Length
	Top	Bot							
SP1	2	2	0	A325	3/4"	2 1/4"	6"	5/8"	10 1/2"
SP2	2	4	0	A325	5/8"	1 3/4"	6"	3/8"	1'-2"

MEMBER TABLE

Mark	Web Depth		Web Plate		Outside Flange			Inside Flange		
	Start	End	Thick	Length	W	Thk	Length	W	Thk	Length
RF3-1	7.4	7.4	0.135	121.9	6	5/16"	143.4	6	1/4"	136.1
	7.4	7.4	0.188	24.0	6	1/4"	8.1			
RF3-2	W10X12				6	1/4"	101.2	6	1/4"	101.2
EB-3	7.5	39.5	0.188	101.2	6	1/4"	101.2	6	1/4"	101.2
EB-5	7.5	39.5	0.188	101.2	6	1/4"	101.2	6	1/4"	101.2



RIGID FRAME SECTION: FRAME LINE 3

APPROVAL DRAWINGS

- APPROVED AS DRAWN
- APPROVED AS NOTED
- NOT APPROVED

____ INITIAL

Please Check And Approve All Dimensions
And Conditions. STANDARD STRUCTURES
Must Be Notified Of Any Changes.

SSI STANDARD STRUCTURES INC.
MANUFACTURER OF METAL BUILDINGS & COMPONENTS

P.O. BOX 1912
ODESSA, TX. 79760
1-800-240-0335



ACCREDITED™
Metal Building Systems
AC 472

APPROVAL & PERMIT

JOB NAME: Pettus Construction

PROJECT NAME: Belcher

JOB LOCATION: Carlsbad, NM 88220

DRAWING TITLE: RIGID FRAME SECTION

DATE: 4/21/26

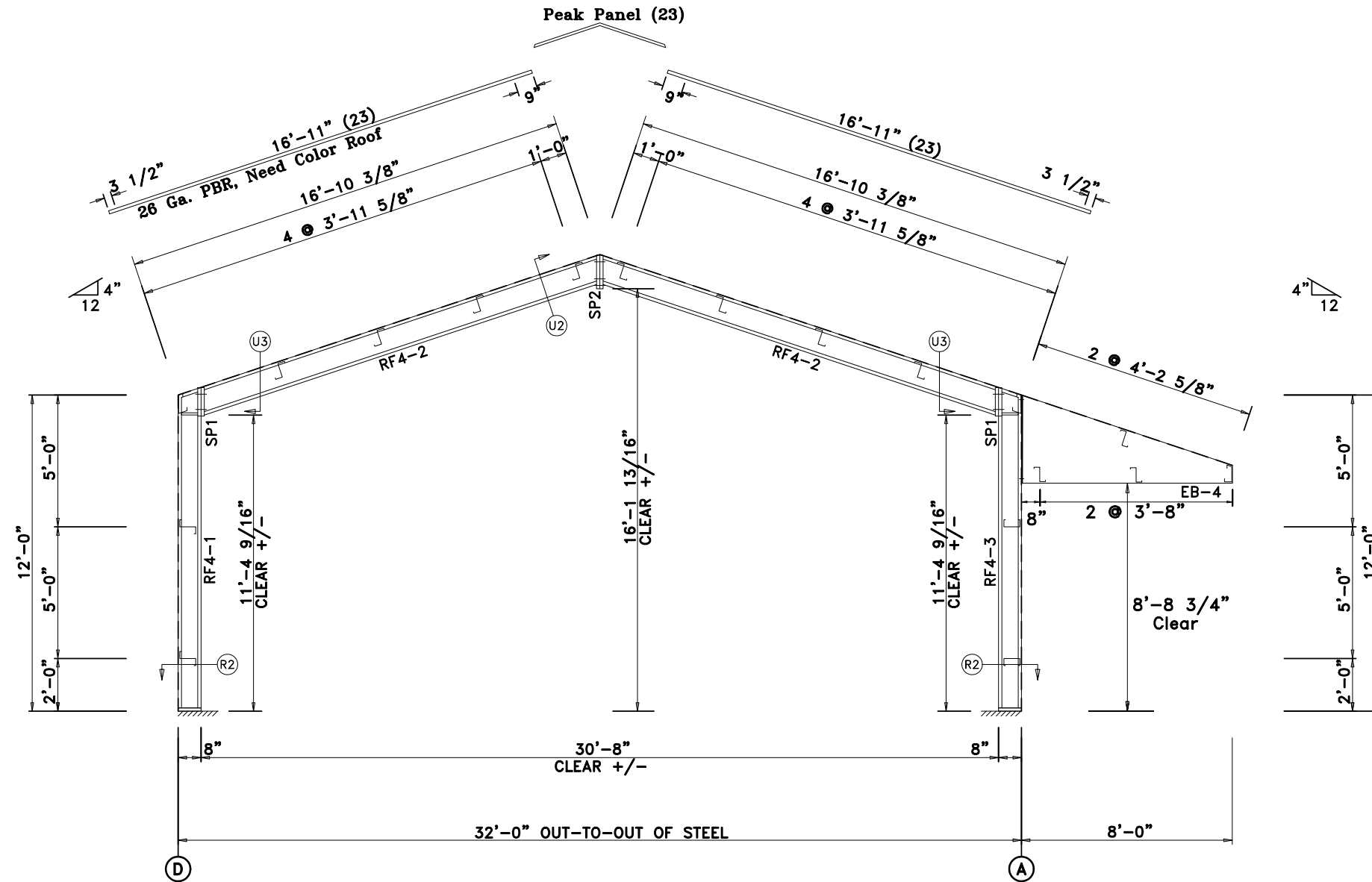
DET:

JOB NO.: 26056

PG.: E-12

SPLICE PLATE & BOLT TABLE									
Mark	Qty		Int	Type	Dia	Length	Width	Thick	Length
	Top	Bot							
SP1	2	2	0	A325	3/4"	2 1/4"	6"	5/8"	10 1/2"
SP2	2	4	0	A325	5/8"	1 3/4"	6"	3/8"	1'-2"

MEMBER TABLE							
Mark	Web Depth		Web Plate		Outside Flange		Inside Flange
	Start/End	Thick	Length	W x Thk x Length	W x Thk x Length		
RF4-1	7.4/ 7.4	0.135	121.9	6 x 5/16" x 143.4	6 x 1/4" x 136.1		
RF4-2	7.4/ 7.4	0.188	24.0	6 x 1/4" x 8.1	6 x 1/4" x 136.1		
RF4-3	W10X12	0.188	24.0	6 x 5/16" x 143.4	6 x 1/4" x 101.2		
EB-4	7.4/ 7.4	0.135	121.9	6 x 1/4" x 8.1	6 x 1/4" x 101.2		
	7.5/39.5	0.188	101.2	6 x 5/16" x 143.4	6 x 1/4" x 101.2		



RIGID FRAME SECTION: FRAME LINE 4

APPROVAL DRAWINGS

- APPROVED AS DRAWN
 - APPROVED AS NOTED
 - NOT APPROVED
- ____ INITIAL

Please Check And Approve All Dimensions
And Conditions. STANDARD STRUCTURES
Must Be Notified Of Any Changes.

SSI STANDARD STRUCTURES INC.
MANUFACTURER OF METAL BUILDINGS & COMPONENTS
P.O. BOX 1912
ODESSA, TX. 79760
1-800-240-0335

IAS
ACCREDITED™
Metal Building Systems
AC 472

APPROVAL & PERMIT

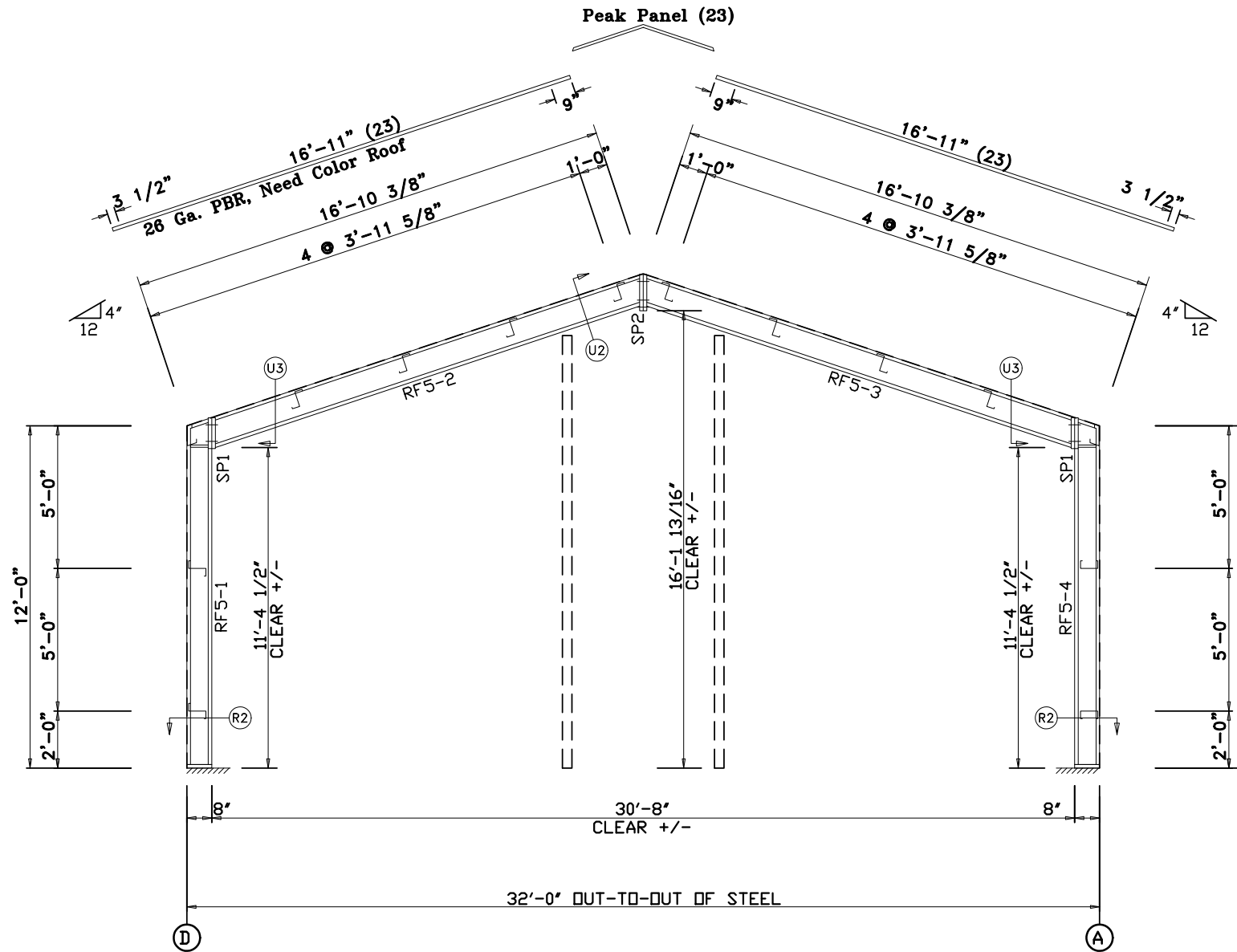
JOB NAME: Pettus Construction
PROJECT NAME: Belcher
JOB LOCATION: Carlsbad, NM 88220
DRAWING TITLE: RIGID FRAME SECTION
DATE: 4/21/26 DET: JOB NO.: 26056 PG.: E-13

SPLICE PLATE & BOLT TABLE

Mark	Qty		Int	Type	Dia	Length	Width	Thick	Length
	Top	Bot							
SP1	2	2	0	A325	3/4"	2"	6"	1/2"	10 1/2"
SP2	2	4	0	A325	5/8"	1 3/4"	6"	3/8"	1'-2"

MEMBER SIZE TABLE

MARK	MEMBER	LENGTH
RF5-1	W8X13	12'-0"
RF5-2	W10X12	16'-1 11/16"
RF5-3	W10X12	16'-1 11/16"
RF5-4	W8X13	12'-0"



RIGID FRAME SECTION: FRAME LINE 5

APPROVAL DRAWINGS

- APPROVED AS DRAWN
- APPROVED AS NOTED
- NOT APPROVED

____ INITIAL

Please Check And Approve All Dimensions
And Conditions. STANDARD STRUCTURES
Must Be Notified Of Any Changes.

SSI STANDARD STRUCTURES INC.
MANUFACTURER OF METAL BUILDINGS & COMPONENTS
P.O. BOX 1912
ODESSA, TX. 79760
1-800-240-0335

IAS
ACCREDITED™
Metal Building Systems
AC 472

APPROVAL & PERMIT

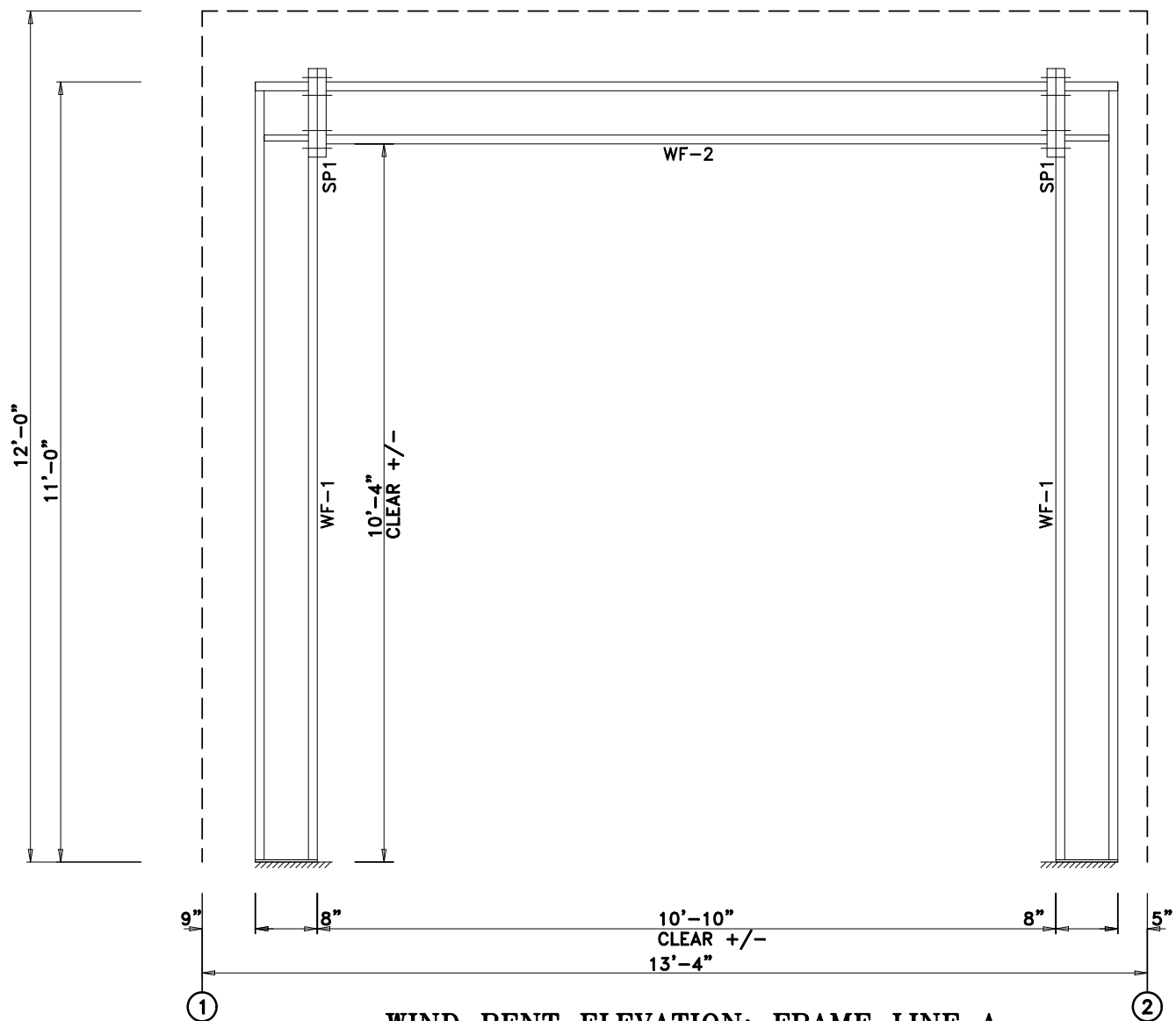
JOB NAME: Pettus Construction
PROJECT NAME: Belcher
JOB LOCATION: Carlsbad, NM 88220
DRAWING TITLE: RIGID FRAME SECTION
DATE: 4/21/26 DET: JOB NO.: 26056 PG.: E-14

SPlice BOLTS					
Splice Mark	Quan Top/Bot	Type	-----Bolt----- Dia	Length	
SP1	4 4	A325	0.625	1.75	

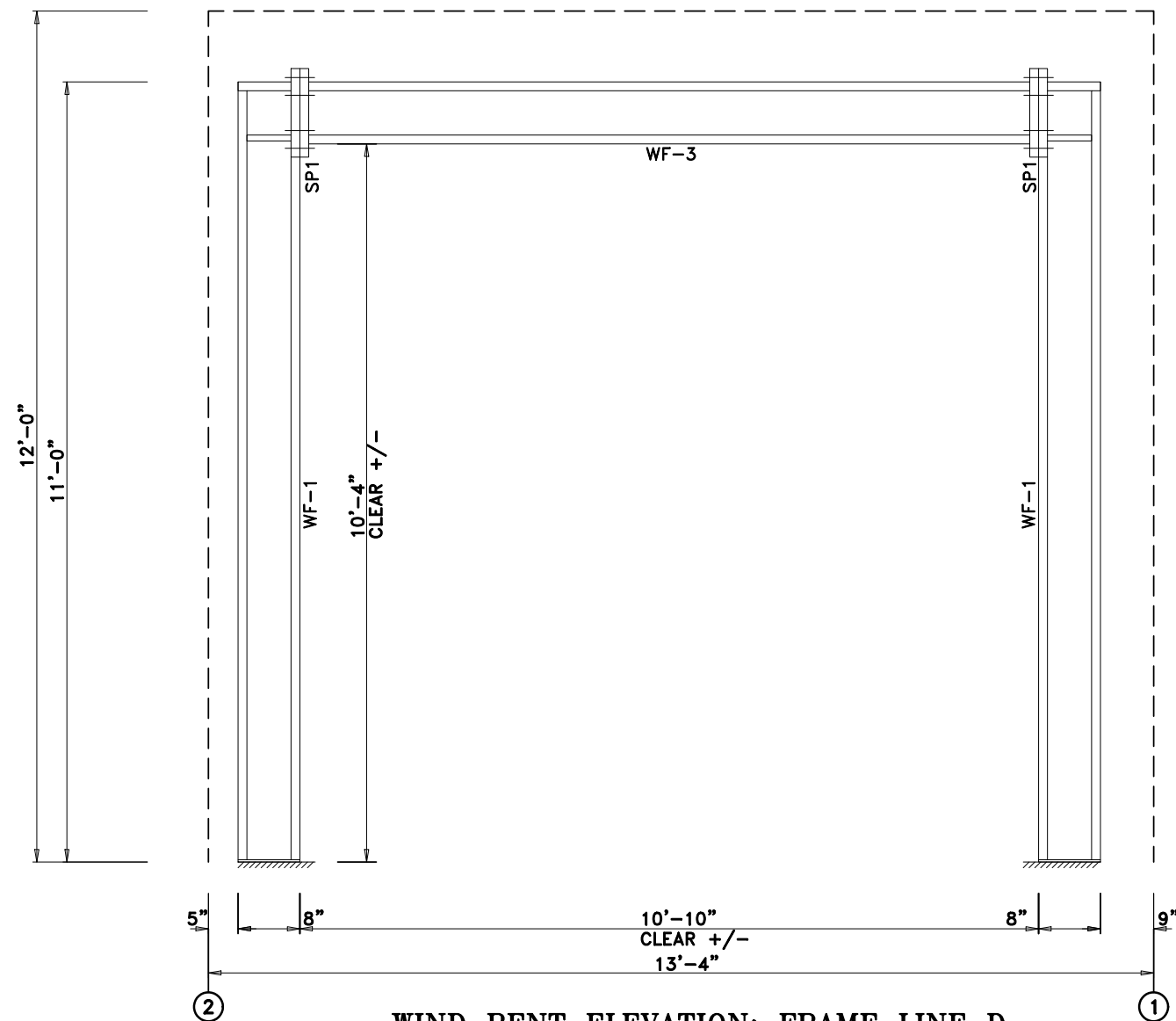
MEMBER SIZE TABLE		
MARK	MEMBER	LENGTH
WF-2	W8X13	10'-9 3/4"
WF-1	W8X13	11'-0"

SPlice BOLTS					
Splice Mark	Quan Top/Bot	Type	-----Bolt----- Dia	Length	
SP1	4 4	A325	0.625	1.75	

MEMBER SIZE TABLE		
MARK	MEMBER	LENGTH
WF-3	W8X13	10'-9 3/4"
WF-1	W8X13	11'-0"



WIND BENT ELEVATION: FRAME LINE A



WIND BENT ELEVATION: FRAME LINE D

APPROVAL DRAWINGS

- APPROVED AS DRAWN
- APPROVED AS NOTED
- NOT APPROVED

____ INITIAL

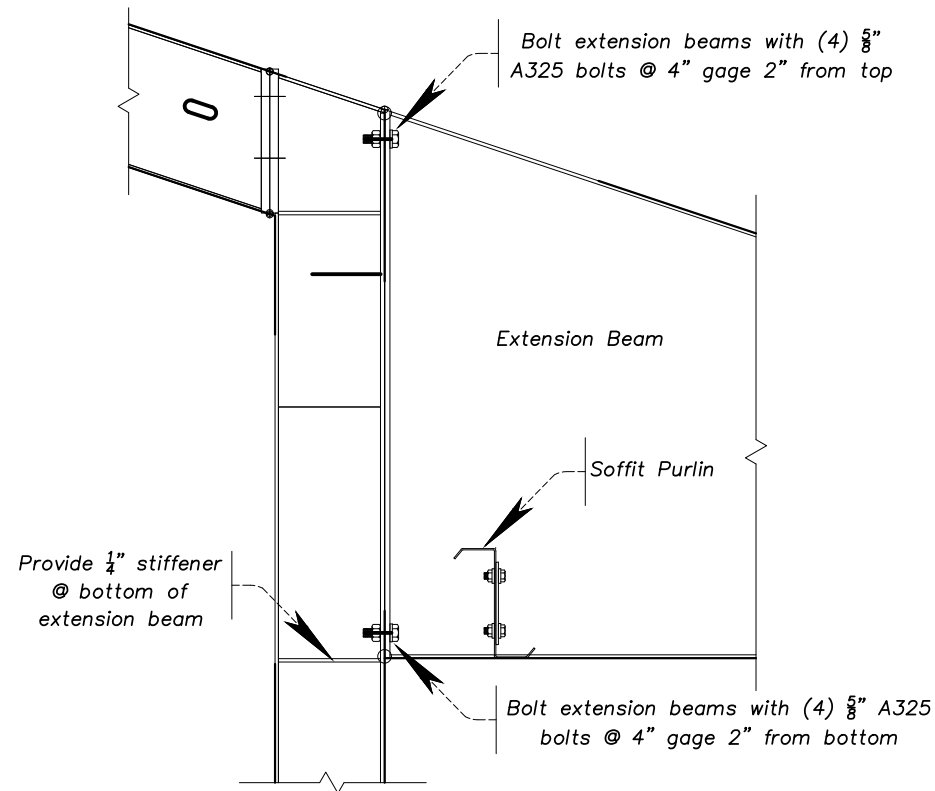
Please Check And Approve All Dimensions And Conditions. STANDARD STRUCTURES Must Be Notified Of Any Changes.

SSI STANDARD STRUCTURES INC.
 MANUFACTURER OF METAL BUILDINGS & COMPONENTS
 P.O. BOX 1912
 ODESSA, TX. 79760
 1-800-240-0335

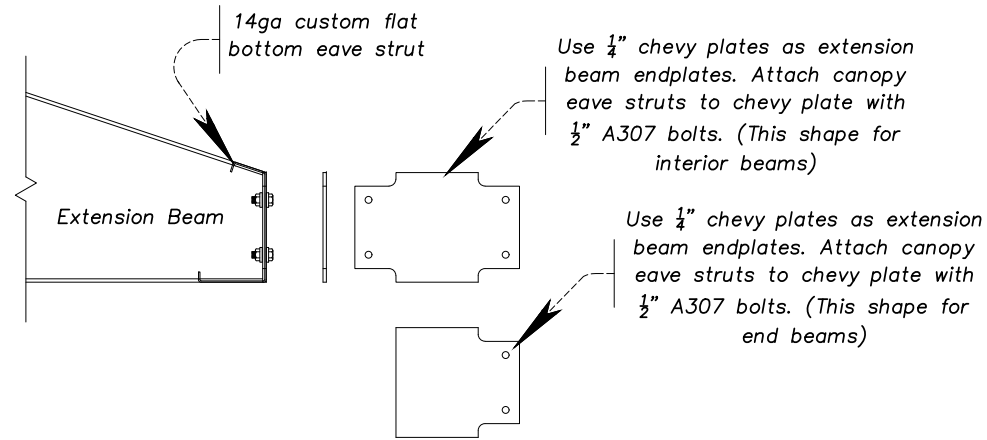
IAS
 ACCREDITED™
 Metal Building Systems
 AC 472

APPROVAL & PERMIT

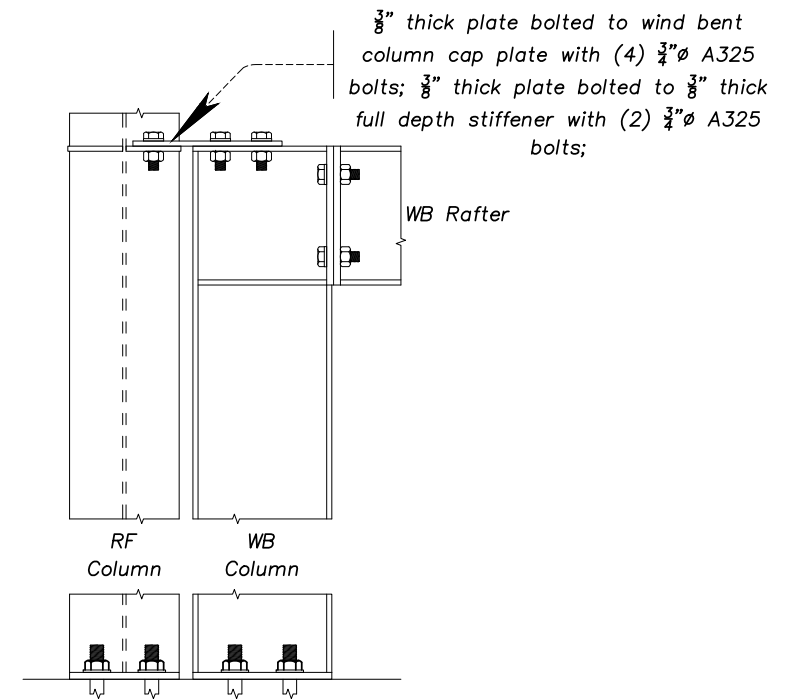
JOB NAME: Pettus Construction
 PROJECT NAME: Belcher
 JOB LOCATION: Carlsbad, NM 88220
 DRAWING TITLE: WIND BENT ELEVATION
 DATE: 4/21/26 DET: _____ JOB NO.: 26056 PG.: E-15



1 Extension Beam Connection Detail



2 Extension Beam Detail



3 Wind Bent Connection Detail

APPROVAL DRAWINGS

- APPROVED AS DRAWN
- APPROVED AS NOTED
- NOT APPROVED

____ INITIAL

Please Check And Approve All Dimensions And Conditions. STANDARD STRUCTURES Must Be Notified Of Any Changes.

SSI STANDARD STRUCTURES INC.
MANUFACTURER OF METAL BUILDINGS & COMPONENTS

P.O. BOX 1912
ODESSA, TX. 79760
1-800-240-0335



ACCREDITED™
Metal Building Systems
AC 472

APPROVAL & PERMIT

JOB NAME: Pettus Construction

PROJECT NAME: Belcher

JOB LOCATION: Carlsbad, NM 88220

DRAWING TITLE: DETAIL DRAWINGS

DATE: 4/21/26

DET:

JOB NO.: 26056

PG.: E-16